

TECHNICAL MANUAL
UNIT, DIRECT SUPPORT, AND
GENERAL SUPPORT
MAINTENANCE REPAIR PARTS AND SPECIAL
TOOLS LIST
FOR

PUMP ASSEMBLY,
FLAMMABLE LIQUID,
BULK TRANSFER,
100 GPM,
DIESEL ENGINE DRIVEN (DED)

Approved for public release; distribution is unlimited.

HEADQUARTERS, DEPARTMENT OF THE ARMY
3 April 1990

CHANGE

HEADQUARTERS
DEPARTMENT OF THE ARMY
WASHINGTON, D.C., 15 October 1993

NO. 1

Unit, Direct Support and General Support
Maintenance Repair Parts and Special Tools List
for
PUMP ASSEMBLY, FLAMMABLE LIQUID,
BULK TRANSFER, 100 GPM,
DIESEL ENGINE DRIVEN (DED)

DISTRIBUTION STATEMENT A: Approved for public release; distribution is unlimited

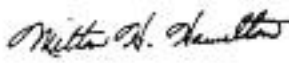
TM 5-4320-313-24P, 3 April 1990, is changed as follows:

1. Remove and insert pages as indicated below. New or changed text material is indicated by a vertical bar in the margin. An illustration change is indicated by a miniature pointing hand.

Remove pages	Insert pages
i and ii fig 1	i and ii fig 1

2. Retain this sheet in front of manual for reference purposes.

By Order of the Secretary of the Army:

Official: 

GORDON R. SULLIVAN
General, United States Army
Chief of Staff

MILTON H. HAMILTON
Administrative Assistant to the
Secretary of the Army
05553

DISTRIBUTION:

To be distributed in accordance with DA Form 12-25-E, block no. 5420, requirements for TM 5-4320-313-24P

**UNIT, DIRECT SUPPORT AND GENERAL SUPPORT MAINTENANCE
 REPAIR PARTS AND SPECIAL TOOLS LIST
 FOR
 PUMP ASSEMBLY, FLAMMABLE LIQUID,
 BULK TRANSFER, 100 GPM,
 DIESEL ENGINE DRIVEN (DED)**

Current as of 22 March 1990

REPORTING ERRORS AND RECOMMENDING IMPROVEMENTS

You can help improve this manual. If you find any mistakes or if you know of a way to improve the procedures, please let us know. Mail your letter, DA Form 2028 (Recommended Changes to Publications and Blank Forms), or DA Form 2028-2 located in the back of this manual directly to: Commander, U.S. Army Aviation and Troop Command, ATTN: AMSAT-I-MP, 4300 Goodfellow Boulevard, St. Louis, MO 63120-1798. A reply will be furnished directly to you.

DISTRIBUTION STATEMENT A: Approved for public release; distribution is unlimited

TABLE OF CONTENTS

		Page	Illus Figure
SECTION I.	INTRODUCTION	1	
SECTION II.	REPAIR PARTS LIST		
Group 01	Pump Assembly		
	Pump Assembly	1-1	1
Group 02	Engine Assembly		
	Air Cleaner Assembly	2-1	2
	Engine Assembly.....	1-1	3
	Air Cleaner Adapter.....	4-1	4
	Fuel System	5-1	5

TABLE OF CONTENTS

	Page	Illus Figure
Injection System.....	6-1	6
Muffler and Guard	7-1	7
Throttle Controls.....	8-1	8
Crank Assembly, Cover and Gears.....	9-1	9
Cowling and Covers	10-1	10
Rocker Arms	11-1	11
Cylinder Head and Valve Assembly.....	12-1	12
Cylinder and Piston	13-1	13
Connecting Rod.....	14-1	14
Timing Cover and Camshaft.....	15-1	15
Governor.....	16-1	16
Flywheel.....	17-1	17
Crankshaft.....	18-1	18
Crankcase.....	19-1	19
Group 03		
Frame Assembly		
Frame.	20-1	20
Section III.		
Special Tools List		
Special Tools List	21-1	21
Section IV.		
Cross Reference Indexes:		
National Stock Number Index.....	I-1	
Part Number Index	I-3	
Figure and Item Number Index.....	I-10	

**UNIT, DIRECT SUPPORT AND GENERAL SUPPORT
MAINTENANCE REPAIR PARTS AND SPECIAL TOOLS LIST**

Section I. INTRODUCTION

1. SCOPE. This RPSTL lists and authorizes spares and repair parts; special tools; special test, measurement, and diagnostic equipment (TMDE); and other special support equipment required for performance of unit, direct support and general support maintenance of the Air Conditioner. It authorizes the requisitioning, issue, and disposition of spares, repair parts and special tools as indicated by the source, maintenance and recoverability (SMR) codes.

2. GENERAL. In addition to this section, Introduction, this Repair Parts and Special Tools List is divided into the following sections:

a. Section II. Repair Parts List. A list of spares and repair parts authorized by this RPSTL for use in the performance of maintenance. This list also includes parts which must be removed for replacement of the authorized parts. Parts lists are composed of functional groups in ascending alphanumeric sequence, with the parts in each group listed in ascending figure and item number sequence. Bulk materials are listed in item name sequence. Repair parts kits are listed separately in functional groups in Section II. Repair parts for repairable special tools are also listed in this section. Items listed are shown in the associated illustration(s)/figure(s).

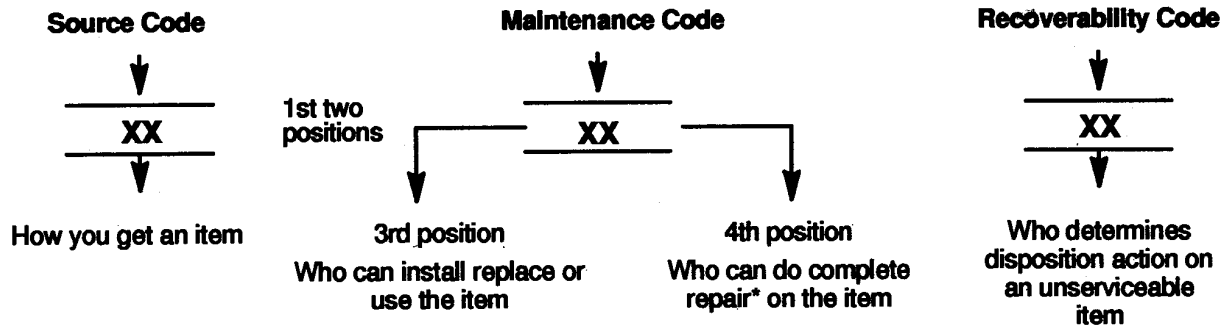
b. Section III. Special Tools List. A list of special tools, special TMDE, and other special support equipment authorized by this RPSTL (as indicated by Basis of Issue (BOI) information in DESCRIPTION AND USABLE ON CODE column) for the performance of maintenance.

c. Section IV. Cross-Reference Index. A list, in National Item Identification Number (NIIN) sequence, of all national stock numbered items appearing in the listing, followed by a list in alphanumeric sequence of all part numbers appearing in the listings. National stock numbers and part numbers are cross referenced to each illustration figure and item number appearance. The figure and item number index lists figure and item numbers in alphanumeric sequence and cross references NSN, CAGEC and part number.

3. EXPLANATION OF COLUMNS (SECTIONS II AND III).

a. ITEM NO. (Column (1)). Indicates the number used to identify items called out in the illustration.

b. SMR Code (Column (2)). The Source, Maintenance, and Recoverability (SMR) code is a 5-position code containing supply/requisitioning information, maintenance category authorization criteria, and disposition instruction, as shown in the following breakout:



* Complete Rear: Maintenance capacity, capability, and authority to perform all corrective maintenance tasks of the "Repair" function in a use/user environment in order to restore serviceability to a failed item.

(1) **Source Code.** The source code tells you how you get an item needed for maintenance, repair, or overhaul of an end item/equipment. Explanations of source codes follow.

Code	Explanation
PA PB PC** PD PE PF PG	Stocked items; use the applicable NSN to request/requisition items with these source codes. They are authorized to the category indicated by the code entered in the 3rd position of the SMR code. **NOTE : Items coded PC are subject to deterioration.
KD KF KB	
MO (Made at org AVUM level) MF (Made at DS/AVUM level) MH (Made at GS level) ML (Made at Specialized Repair Activity (SRA)) MD (Made at Depot)	Items with these codes are not to be requested/requisitioned individually. They are part of a kit which is authorized to the maintenance category indicated in the 3rd position of the SMR code. The complete kit must be requisitioned and applied. Items with these codes are not to be requested/requisitioned individually. They must be made from bulk material which is identified by the part number in the DESCRIPTION and USABLE ON CODE (UOC) column and listed in the Bulk Material group of the repair parts list in the RPSTL. If the item is authorized to you by the 3rd position code of the SMR code, but the source code indicates it is made at a higher level, order the item from the higher level of maintenance.

<p>AO (Assembled by org AVUM Level)</p> <p>AF (Assembled by DS/AVUM Level)</p> <p>AH (Assembled by GS Category)</p> <p>AL (Assembled by SRA)</p> <p>AD (Assembled by Depot)</p>	}	<p>Items with these codes are not to be requested/requisitioned individually. The parts that make up the assembled item must be requisitioned or fabricated and assembled at the level of maintenance indicated by the source code. If the 3rd position code of the SMR code, authorizes you to replace the item, but the source code indicates the items are assembled at a higher level, order the item from the higher level of maintenance.</p>
---	---	---

Code	Explanation
------	-------------

- XA - - Do not requisition an "XA"-coded item. Order its next higher assembly. (Also, refer to the NOTE below.)
- XB - - If an "XB" item is not available from salvage, order it using the CAGE Code and part number given.
- XC - - Installation drawing, diagram, instruction sheet, field service drawing, that is identified by manufacturer's part number.
- XD - - Item is not stocked. Order an "XD"-coded item through normal supply channels using the CAGE Code and part number given, if no NSN is available.

NOTE

Cannibalization or controlled exchange, when authorized, may be used as a source of supply for items with the above source codes, except for those source coded "XA" or those aircraft support items restricted by requirements of AR 750-1

(2) Maintenance Code. Maintenance codes tell you the level(s) of maintenance authorized to USE and REPAIR support items. The maintenance codes are entered in the third and fourth positions of the SMR code as follows:

(a) The maintenance code entered in the third position tells you the lowest maintenance level authorized to remove, replace, and use an item. The maintenance code entered in the third position will indicate authorization to the following levels of maintenance.

Maintenance Code	Application/Explanation
C	Crew or operator maintenance done within unit/AVUM maintenance.
O	Unit level VAVUM maintenance can remove, replace, and use the item.
F	Direct support/AVIM maintenance can remove, replace, and use the item.
H	General support maintenance can remove, replace, and use the item.
L	Specialized repair activity can remove, replace, and use the item.
D	Depot can remove, replace, and use the item.

(b) The maintenance code entered in the fourth position tells whether or not the item is to be repaired and identifies the lowest maintenance level with the capability to do complete repair (i.e., perform all authorized repair functions). This position will contain one of the following maintenance codes.

NOTE

Some limited repair may be done on an item at a lower level of maintenance, if authorized by the Maintenance Allocation Chart (MAC) and SMR codes.

Maintenance Code	Application/Explanation
O	Unit VAVUM is the lowest level that can do complete repair of the item.
F	Direct support VAVIM is the lowest level that can do complete repair of the item.
H	General Support is the lowest level that can do complete repair of the item.
L	Specialized repair activity is the lowest level that can do complete repair of the item.
D	Depot is the lowest level that can do complete repair of the item.
Z	Nonreparable. No repair is authorized.
B	No repair is authorized. No parts or special tools are authorized for the maintenance of a "B" coded item. However, the item may be reconditioned by adjusting, lubricating, etc., at the user level.

(3) Recoverability Code. Recoverability codes are assigned to items to indicate the disposition action on unserviceable items. The recoverability code is entered in the fifth position of the SMR Code as follows:

Recoverability Codes	Application/Explanation
Z	Nonreparable item. When unserviceable, condemn and dispose of the item at the level of maintenance shown in 3rd position of SMR Code.
O	Reparable item. When not economically repairable, condemn and dispose of the item at unit or AVUM level.
F	Reparable item. When uneconomically repairable, condemn and dispose of the item at the direct support or AVIM level.
H	Reparable item. When uneconomically repairable, condemn and dispose of the item at the general support level.
D	Reparable item. When beyond lower level repair capability, return to depot. Condemnation and disposal of item not authorized below depot level.
L	Reparable item. Condemnation and disposal not authorized below specialized repair activity (SRA).
A	Item requires special handling or condemnation procedures because of specific reasons (e.g., precious metal content, high dollar value, critical material, or hazardous material). Refer to appropriate manuals/directives for specific instructions.

c. FSCM (Column (3)). The Federal Supply Code for Manufacturer (FSCM) is a 5-digit numeric code which is used to identify the manufacturer, distributor, or Government agency/activity that supplies the item.

d. PART NUMBER (Column (4)). Indicates the primary number used by the manufacturer, (individual, company, firm, corporation, or Government activity), which controls the design and characteristics of the item by means of its engineering drawings, specifications, standards, and inspection requirements to identify an item or range of items.

NOTE

When you use an NSN to requisition an item, the item you receive may have a different part number from the number listed.

e. DESCRIPTION AND USABLE ON CODE (UOC) (Column (5)). This column includes the following information:

- (1) The Federal item name and, when required, a minimum description to identify the item.
- (2) The physical security classification of the item is indicated by the parenthetical entry, e.g., Phy Sec C1 (C)-Confidential, Phy Sec C1 (S)-Secret, Phy Sec C1 (T)-Top-Secret.
- (3) Items that are included in kits and sets are listed below the name of the kit or set.
- (4) Spare/repair parts that make up an assembled item are listed immediately following the assembled item line entry.
- (5) Part numbers of bulk materials are referenced in this column in the line entry for the item to be manufactured/fabricated.
- (6) When the item is not used with all serial numbers of the same model, the effective serial numbers are shown on the last line(s) of the description (before UOC).
- (7) The usable on code, when applicable (reference paragraph 5, Special Information).
- (8) In the Special Tools List Section, the basis of issue (BOI) appears as the last line(s) in the entry for each special tool, special TMDE, and other special support equipment. When density of equipment supported exceeds density spread indicated in the basis of issue, the total authorization is increased proportionately.
- (9) The statement "END OF FIGURE" appears just below the last item description in Column (5) for a given figure in both Section II and Section III.
- (10) The denture, shown as dots appearing before the repair part, indicates that the item is a repair part of the next higher assembly.

f. QTY (Column (6)). The QTY (quantity per figure) column indicates the quantity of the item used in the breakout shown on the illustration/figure, which is prepared for a functional group, subfunctional group, or an assembly. A "V" appearing in this column instead of a quantity indicates that the quantity is variable and may vary from application to application.

4. EXPLANATION OF INDEX FORMAT AND COLUMNS (SECTION IV).

a. NATIONAL STOCK NUMBER (NSN) INDEX.

- (1) **STOCK NUMBER Column.** This column lists the NSN in national item identification number

(NIIN) sequence. The NIIN consists of the last nine digits of the NSN, i.e.

NSN
5305-01-574-1467
NIIN

When using this column to locate an item, ignore the first four digits of the NSN. Use the complete NSN (1 3 digits) when requisitioning items by stock number.

(2) FIG. Column. This column lists the number of the figure where the item is identified/located. The figures are in numerical order in Section II and Section III.

(3) ITEM Column. The item number identifies the item associated with the figure listed in the adjacent FIG. column. This item is also identified by the NSN listed on the same line.

b. PART NUMBER INDEX. Part numbers in this index are listed in ascending alphanumeric sequence (i. e., vertical arrangement of letter and number combinations which place the first letter or digit of each group in order A through Z, followed by the numbers 0 through 9, and each following letter or digit in like order).

(1) CAGEC Column. The Commercial and Government Entity Code (CAGEC) is a 5-digit numeric code used to identify the manufacturer, distributor, or Government agency/activity that supplies the item.

(2) PART NUMBER Column. Indicates the primary number used by the manufacturer (individual, firm, corporation, or Government activity), which controls the design and characteristics of the item by means of its engineering drawings, specifications, standards, and inspection requirements to identify an item or range of items.

(3) STOCK NUMBER Column. This column lists the NSN for the associated part number and manufacturer identified in the PART NUMBER and CAGEC columns to the left.

(4) FIG. Column. This column lists the number of the figure where the item is identified/located in Section II and Section III.

(5) ITEM Column. The item number is that number assigned to the item as it appears in the figure referenced in the adjacent figure number column.

c. FIGURE AND ITEM NUMBER INDEX.

(1) FIG. Column. This column lists the number of the figure where the item is identified/located in Section II and Section III.

(2) ITEM Column. The item number is that number assigned to the item as it appears in the figure referenced in the adjacent figure number column.

(3) STOCK NUMBER Column. This column lists the NSN for the item.

(4) CAGEC Column. The Commercial and Government Entity Code (CAGEC) is a 5-digit numeric code used to identify the manufacturer, distributor, or Government agency/activity that supplies the item.

(5) PART NUMBER Column. Indicates the primary number used by the manufacturer (individual, firm, corporation, or Government activity), which controls the design and characteristics of the item by means of its engineering drawings, specifications, standards, and inspection requirements to identify an item or range of items.

5. SPECIAL INFORMATION.

a. USABLE ON CODE. The usable on code appears in the lower left corner of the Description column heading. Usable on codes are shown as "UOC:.." in the Description Column (justified left) on the last line of the applicable item description/nomenclature. Uncoded items are applicable to all models.

b. ASSOCIATED PUBLICATIONS. The publications listed below pertain to the Air Conditioner and its components.

Publication	Short Title
TM 5-4320-313-14	Pump Assembly, Flammable Liquid

6. HOW TO LOCATE REPAIR PARTS.

a. When National Stock Numbers or Part Numbers are NOT Known.

(1) First. Using the table of contents, determine the assembly or subassembly group to which the item belongs. This is necessary since figures are prepared for assembly groups and subassembly groups, and listings are divided into the same groups.

(2) Second. Find the figure covering the assembly group or subassembly group to which the item belongs.

(3) Third. Identify the item on the figure and use the Figure and Item Number Index to find the NSN.

b. When National Stock Number or Part Number is Known.

(1) First. Using the of National Stock Number and Part Number Indexes find the pertinent National Stock Number or Part Number. The NSN index is in National Item Identification Number (NIIN) sequence (see paragraph 4.a.). The part numbers in the Part Number index are listed in ascending alphanumeric sequence (see paragraph 4.b.). Both indexes cross-reference you to the illustration/figure and item number of the item you are looking for.

(2) Second. Turn to the figure and item number, verify that the item is the one you are looking for, then locate the item number in the repair parts list for the figure.

7. ABBREVIATIONS. Abbreviations used in this manual are listed in MIL-STD-12.

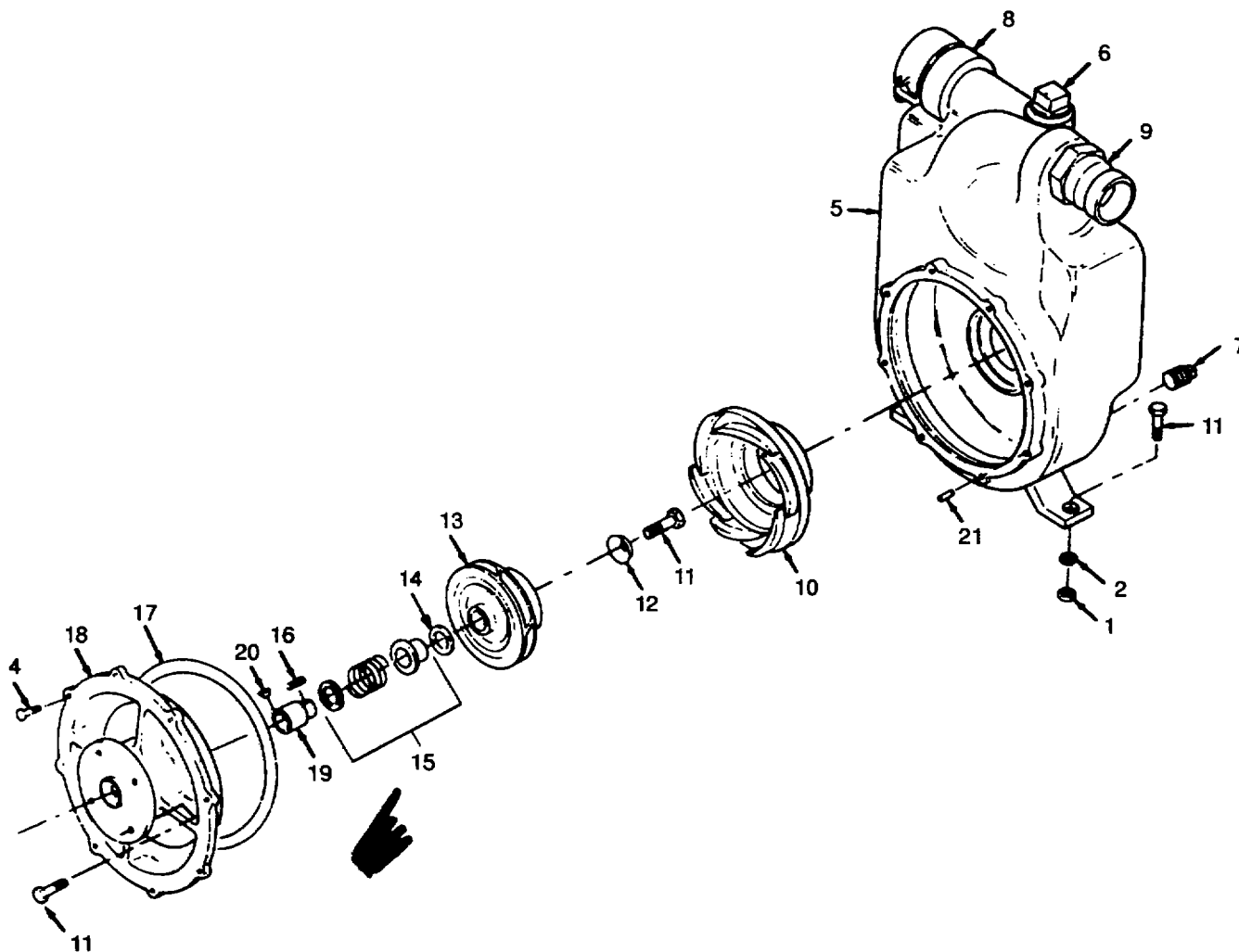


Figure 1. Pump Assembly.

Change 1.

(1) ITEM NO	(2) SMR CODE	(3) FSCM	(4) PART NUMBER	(5) DESCRIPTION AND USABLE ON CODES(UOC)	(6) QTY
GROUP 01 PUMP ASSEMBLY					
FIG. 1 PUMP ASSEMBLY					
1	PAFZZ	96906	MS51967-8	NUT,PLAIN,HEXAGON	2
2	PAFZZ	96906	MS35338-46	WASHER LOCK.....	2
3	PAFZZ	96906	MS90725-60	SCREW,CAP,HEXAGON H.....	2
	PBFFO	97403	13219E3949	PUMP,CENTRIFUGAL	1
4	PAFZZ	96906	MS51096-359	•SCREW,CAP,HEXAGON H:	8
5	XDFZZ	97403	13219E3948	•HOUSING,MECHANICAL	1
6	PAFZZ	96906	MS20913-8	•PLUG,PIPE.....	1
7	PAFZZ	96906	MS20913-4	•PLUG,PIPE.....	1
8	PAFZZ	96906	MS27026-11	•COUPLING HALF,QUICK	1
9	PAFZZ	96906	MS27022-11	•COUPLING HALF,QUICK	1
10	PAFZZ	97403	13219E3947	•DIFFUSER ASSY	1
11	PAFZZ	96906	MS90726-34	•BOLT,MACHINE	5
12	PAFZZ	97403	13219E3937	•WASHER,IMPELLER	1
13	PBFZZ	97403	13219E3941	•IMPELLER ASSEMBLY,P	1
14	PAFZZ	97403	13219E3938	•SHIM	1
15	PAFZZ	97403	13219E3942	•SEAL ASSEMBLY	1
16	PAFZZ	96906	MS20066-141	•KEY,MACHINE	1
17	PAFZZ	96906	MS29513-270	•PACKING,PREFORMED	1
18	XDFZZ	97403	13219E3944	•BACKHEAD	1
19	XDFZZ	97403	13219E3943	•SHAFT,SHOULDERED.....	1
20	PAFZZ	96906	MS35756-34	•KEY,WOODRUFF	1
21	PAFZZ	96906	MS124698	•INSERT,SCREW THREAD.....	8

END OF FIGURE

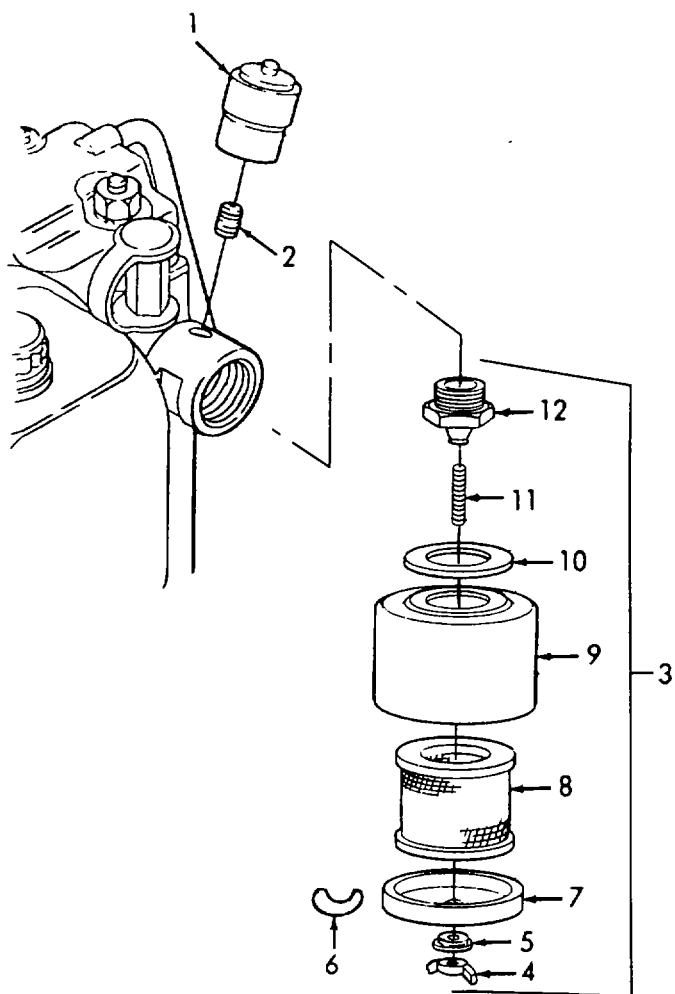


Figure 2. Air Cleaner Assembly.

(1) ITEM NO	(2) SMR CODE	(3) FSCM	(4) PART NUMBER	(5) DESCRIPTION AND USABLE ON CODES(UOC)	(6) QTY
GROUP 02 ENGINE ASSEMBLY					
FIG. 2 AIR CLEANER ASSEMBLY					
1	PAOZZ	18265	RBX00-2250	INDICATOR,FILTER WA.....	1
2	PAOZZ	05748	03245	NIPPLE	1
3	PBOOZ	00736	204302	FILTER,FLUID.....	1
4	PAOZZ	00736	20515C	•NUT	1
5	PAOZZ	00736	22852	•WASHER,SEALING.....	1
6	XAOZZ	00736	A198638-33	•LABEL	1
7	XBOZZ	00736	1NB-001	•TOP	1
8	PAOZZ	00736	1DM-007	•FILTER ELEMENT,INTA.....	1
9	PBOZZ	00736	204302-800	•HOOD.....	1
10	PAOZZ	00736	12B-006	•GASKET	1
11	XBOZZ	00736	1NB-004	•STUD.....	1
12	XBOZZ	00736	12PGJ	•CONNECTOR.....	1

END OF FIGURE

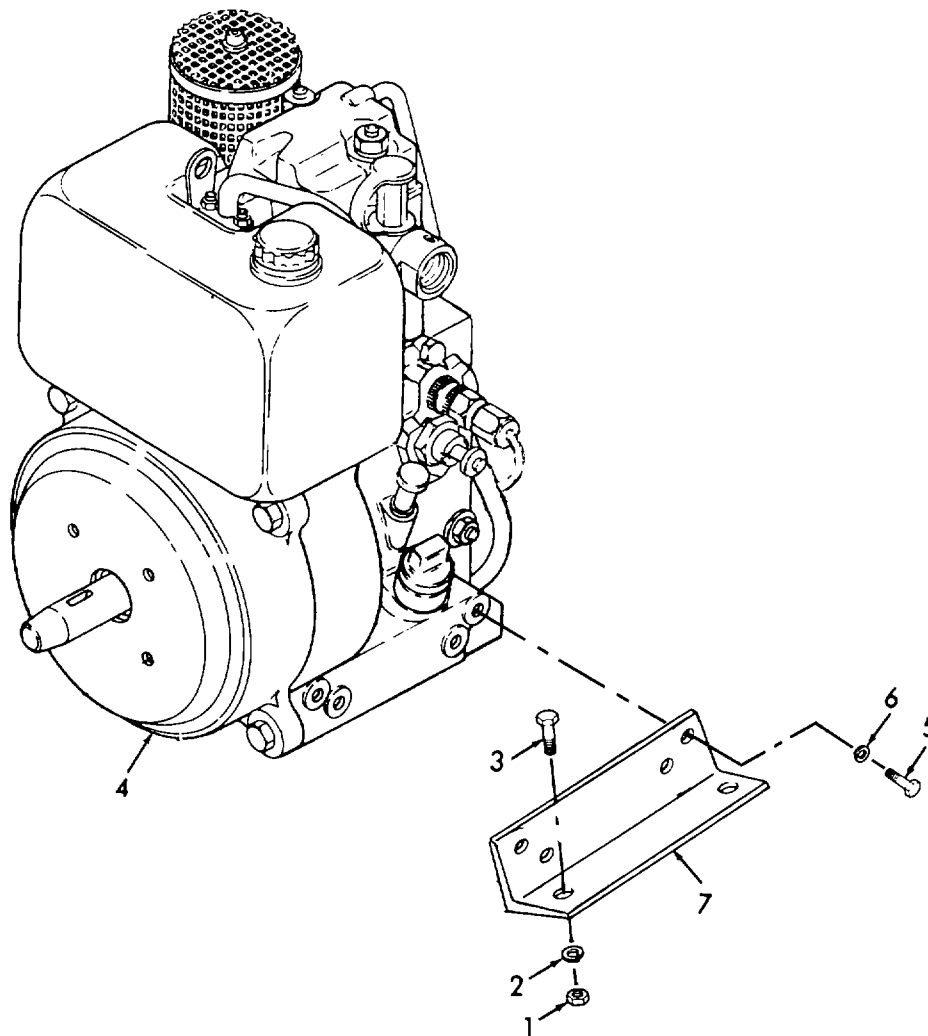


Figure 3. Engine Assembly.

(1) ITEM NO	(2) SMR CODE	(3) FSCM	(4) PART NUMBER	(5) DESCRIPTION AND USABLE ON CODES(UOC)	(6) QTY
GROUP 02 ENGINE ASSEMBLY					
FIG. 3 ENGINE ASSEMBLY					
1	PAFZZ	96906	MS51967-8	NUT,PLAIN,HEXAGON	4
2	PAFZZ	96906	MS35338-46	WASHER LOCK.....	4
3	PAFZZ	96906	MS90725-60	SCREW,CAP,HEXAGON H.....	4
4	PBFHH	61080	E673LHK-241	ENGINE,DIESEL	1
5	PAFZA	61080	50029200	•BOLT,MACHINE	8
6	PAFZA	61080	50002900	•WASHER,LOCK	8
7	XDFZZ	61080	03062100	•BRACKET ENGINE MTG	2

END OF FIGURE

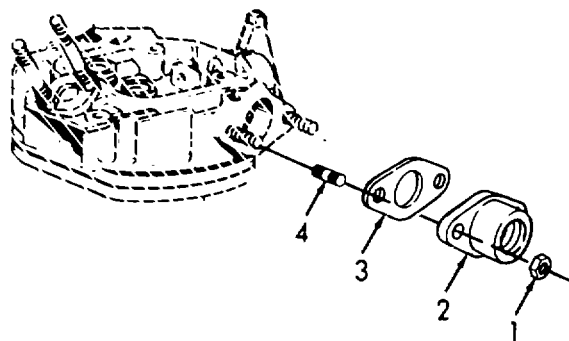


Figure 4. Air Cleaner Adapter.

(1) ITEM NO	(2) SMR CODE	(3) FSCM	(4) PART NUMBER	(5) DESCRIPTION AND USABLE ON CODES(UOC)	(6) QTY
GROUP 02 ENGINE ASSEMBLY					
FIG. 4 AIR CLEANER ADAPTER					
1	PAFZZ	61080	40081600	•NUT,HEXAGON.....	2
2	XDFZZ	61080	03892600	•FLANGE AIR CLEANER.....	1
3	KFFZZ	61080	03477200	•GASKET PART OF KIT P/N 00910610.....	1
4	PAFZA	61080	50037200	•STUD,PLAIN.....	2
END OF FIGURE					

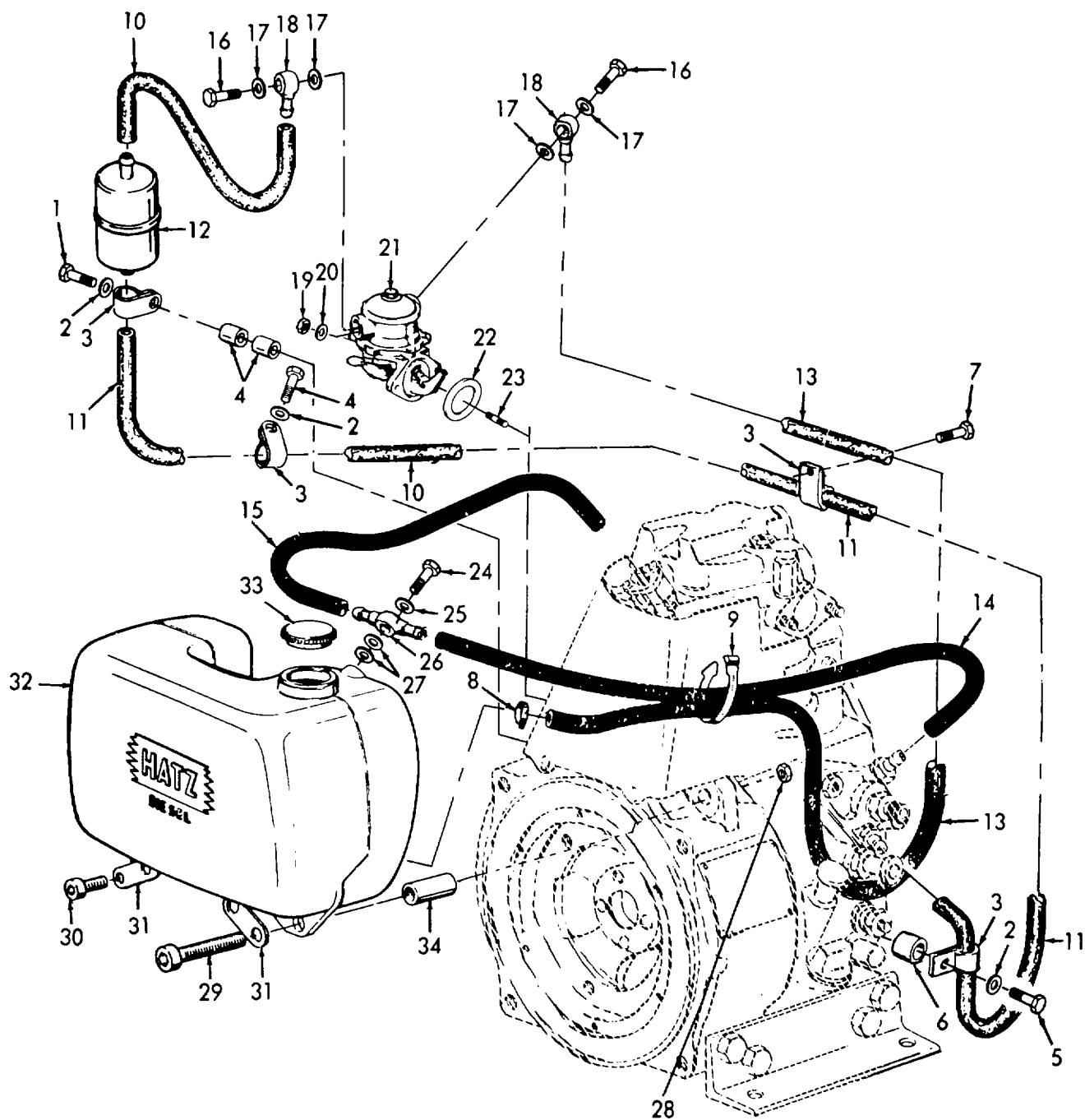


Figure 5. Fuel System.

(1) ITEM NO	(2) SMR CODE	(3) FSCM	(4) PART NUMBER	(5) DESCRIPTION AND USABLE ON CODES(UOC)	(6) QTY
GROUP 02 ENGINE ASSEMBLY					
FIG. 5 FUEL SYSTEM					
1	PAOZZ	61080	50052700	•SCREW,HEX.....	2
2	PAOZZ	61080	50165600	•WASHER.....	3
3	PAOZZ	61080	03165500	•CLIP,PIPE	4
4	PAOZZ	61080	03520600	•SPACER.....	2
5	PAOZZ	61080	50173100	•SCREW,HEX.....	1
6	PAOZA	61080	03292900	•SPACER,SLEEVE	1
7	PAOZZ	61080	50133900	•SCREW,HEX.....	1
8	PAOZZ	61080	40037300	•CLAMP	1
9	PAOZZ	61080	40092700	•STRAP.....	1
10	PAOZZ	61080	03493100	•FUEL LINE 60 MM.....	1
11	PAOZZ	61080	03525600	•FUEL LINE 400 MM.....	1
12	PAOZZ	61080	40089401	•FILTER,FUEL	1
13	PAOZZ	61080	03674200	•HOSE,NONMETALLIC	1
14	PAOZZ	61080	03493600	•FUEL LINE 330 MM.....	1
15	PAOZZ	61080	03493300	•FUEL LINE 140 MM.....	1
16	PAOZZ	61080	50006400	•BOLT,FLUID PASSAGE	2
17	PAOZA	61080	50001200	•GASKET	4
18	PBOZZ	61080	50015900	•SPACER,RING	2
19	PAOZA	61080	40028300	•NUT,SELF-LOCKING,HE.....	2
20	PAOZA	61080	50003500	•WASHER,SPRING TENS.....	2
21	PAOZF	61080	50181400	•PUMP,FUEL,CAM ACTUA.....	1
22	PAOZZ	61080	50129900	•GASKET	1
23	PAFZZ	61080	50144300	•STUD,PLAIN.....	2
24	PBOZZ	61080	50169700	•BOLT,MACHINE	1
25	PAOZZ	61080	50062400	•WASHER,SEALING PART OF KIT P/N	1
				01229700	
26	XDOZZ	61080	40093300	•FITTING BANJO.....	1
27	PAOZZ	61080	50158300	•WASHER.....	2
28	PAOZZ	61080	40028400	•NUT,SELF-LOCKING,HE.....	1
29	PAOZZ	61080	50171600	•SCREW MACHINE ALLEN	2
30	PAOZZ	61080	50171500	•SCREW MACHINE ALLEN	2
31	PAOZZ	61080	03525800	•SPACER.....	4
32	XDOZZ	61080	00691300	•FUEL TANK.....	1
33	PAOZZ	61080	40032611	•CAP,FILLER OPENING	1
34	PAOZZ	61080	03493000	•SPACER.....	2

END OF FIGURE

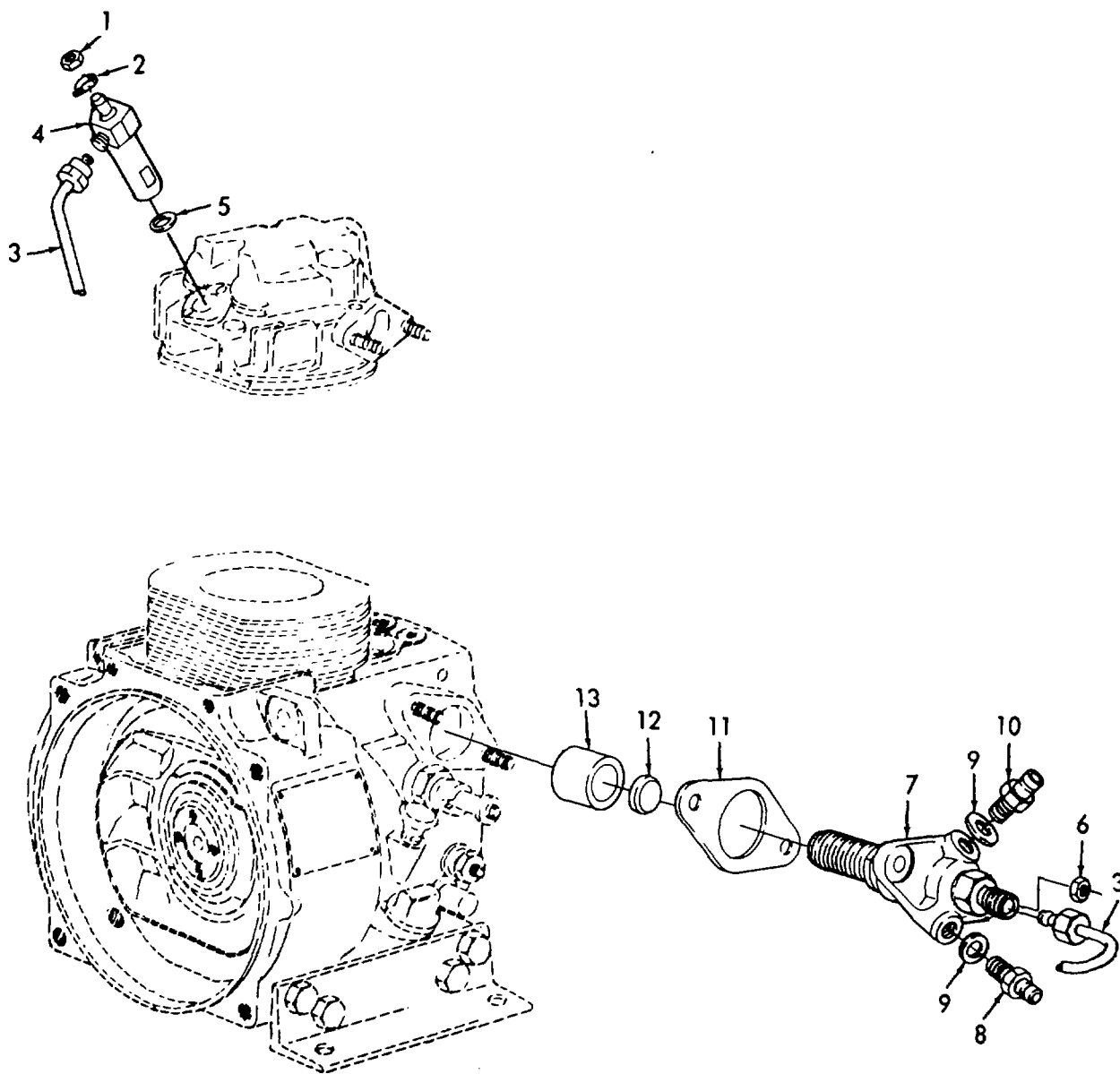


Figure 6. Injection System.

(1) ITEM NO	(2) SMR CODE	(3) FSCM	(4) PART NUMBER	(5) DESCRIPTION AND USABLE ON CODES(UOC)	(6) QTY
GROUP 02 ENGINE ASSEMBLY					
FIG. 6 INJECTION SYSTEM					
1	PAFZA	61080	50022700	•NUT,PLAIN,HEXAGON.....	2
2	XDFZA	61080	03447300	•CLAMP,FUEL INJECTIO	1
3	PBOZZ	61080	03405700	•TUBE AND FITTINGS,M.....	1
4	PBFZZ	61080	40006600	•INJECTOR ASSEMBLY,F.....	1
5	PBFZZ	61080	40003100	•WASHER,JOINT.....	1
6	PAFZZ	61080	50022900	•NUT,PLAIN,HEXAGON.....	2
7	PAFZZ	61080	40080201	•PUMP,INJECTION.....	1
8	PAFZZ	61080	03485000	•CONNECTION HOSE.....	1
9	PAFZA	61080	50001100	•GASKET PART OF KIT P/N 00910610	2
				PART OF KIT P/N 01229700.....	
10	PAFZZ	61080	00671001	•VALVE,CHECK.....	1
11	PAFZZ	61080	03209400	•SHIM	1
11	PAFZA	61080	03209500	•GASKET	1
11	PAFZA	61080	03209600	•GASKET	1
11	PAFZZ	61080	03209700	•SHIM	1
11	PAFZZ	61080	03209800	•SHIM	1
12	XDFZZ	61080	03062600	•SPACER.....	1
13	XDFZZ	61080	03064000	•TAPPET.....	1

END OF FIGURE

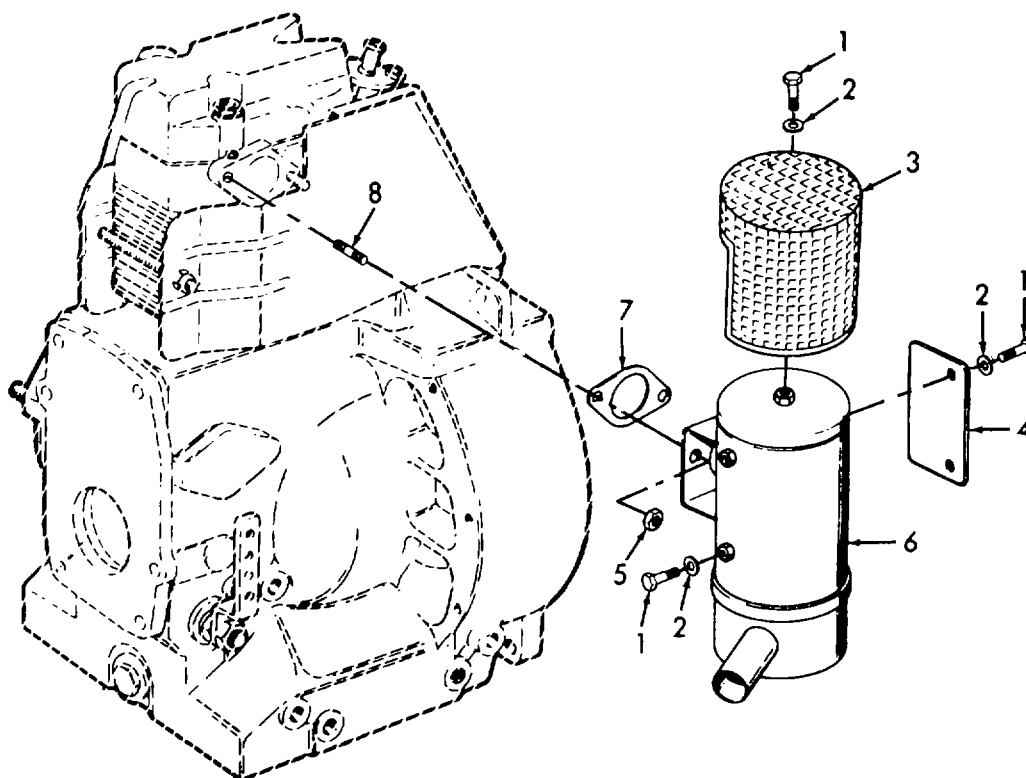


Figure 7. Muffler and Guard.

(1) ITEM NO	(2) SMR CODE	(3) FSCM	(4) PART NUMBER	(5) DESCRIPTION AND USABLE ON CODES(UOC)	(6) QTY
GROUP 02 ENGINE ASSEMBLY					
FIG. 7 MUFFLER AND GUARD					
1	PAOZZ	61080	50173100	•SCREW,HEX.....	4
2	PAOZZ	61080	50016800	•WASHER LOCK.....	6
3	XDOZZ	61080	03899000	•GUARD MUFFLER.....	1
4	XDOZZ	61080	03699700	•SHIELD HEAT.....	1
5	PAOZZ	61080	40081600	•NUT,HEXAGON.....	2
6	PBOZZ	61080	99400010	•ARRESTER,SPARK EXHA.....	1
7	PAOZZ	61080	50122400	•GASKET PART OF KIT P/N 00910610.....	1
8	XDFZZ	61080	50037800	•STUD.....	2

END OF FIGURE

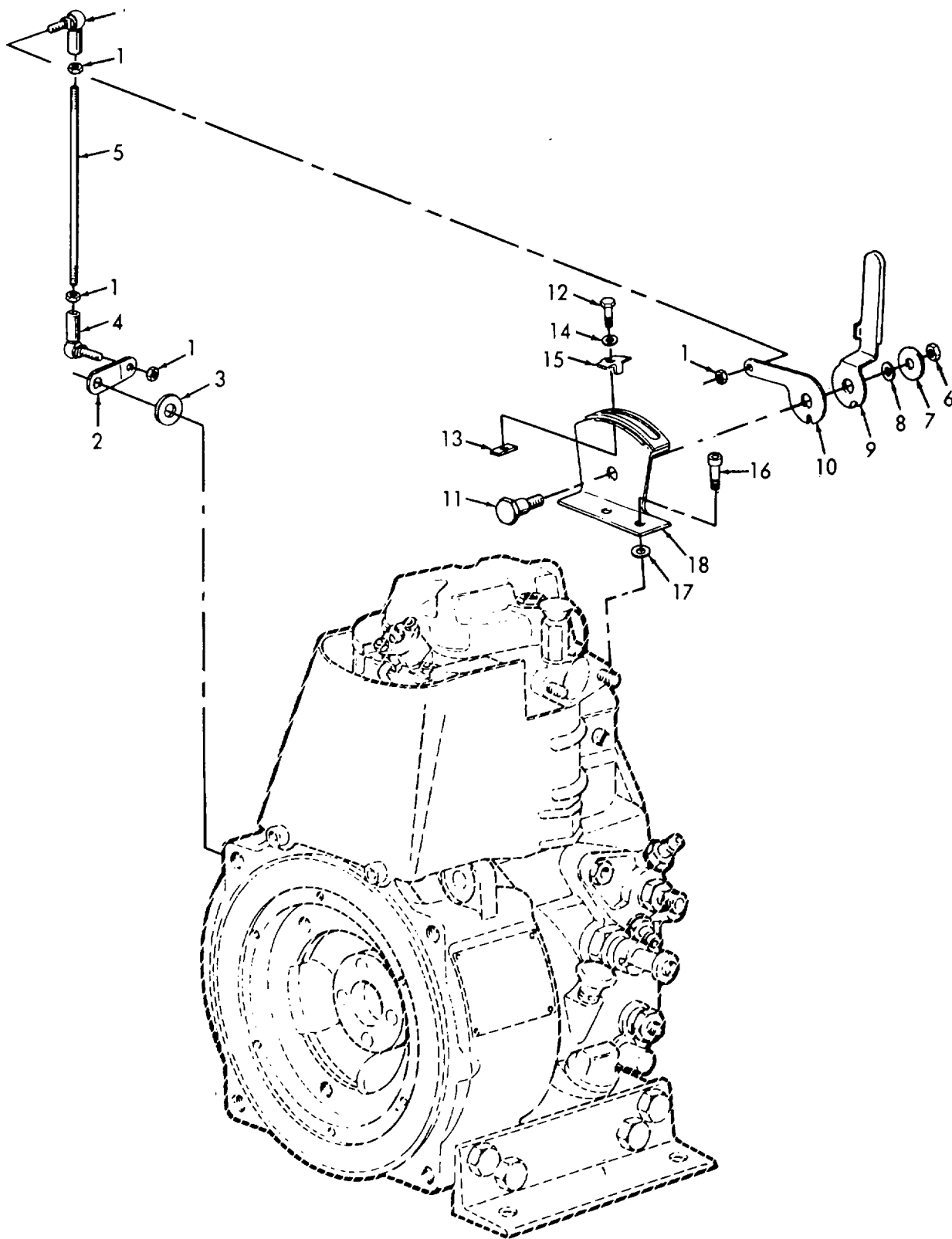


Figure 8. Throttle Controls.

(1) ITEM NO	(2) SMR CODE	(3) FSCM	(4) PART NUMBER	(5) DESCRIPTION AND USABLE ON CODES(UOC)	(6) QTY
GROUP 02 ENGINE ASSEMBLY					
FIG. 8 THROTTLE CONTROLS					
1	PAOZA	61080	50022700	•NUT,PLAIN,HEXAGON.....	4
2	XDOZZ	61080	03511900	•LEVER.....	1
3	PAOZA	61080	03105600	•WASHER,FLAT	1
4	XDOZZ	61080	50133300	•BALL JOINT ROD END	2
5	XDOZZ	61080	03511000	•ROD THREADED	1
6	PAOZZ	61080	50023200	•NUT,HEXAGON.....	1
7	PAOZZ	61080	50062900	•DISC,WASHER	1
8	PAOZA	61080	50003500	•WASHER,SPRING TENSI.....	1
9	XDOZZ	61080	03511500	•LEVER THROTTLE	1
10	XDOZZ	61080	03511600	•LEVER.....	1
11	PAOZZ	61080	03511700	•SCREW	1
12	PAOZZ	61080	50025100	•SCREW,HEX.....	1
13	PAOZZ	61080	03112101	•NUT	1
14	XDOZZ	61080	50016500	•DISC.....	1
15	XDOZZ	61080	03112200	•STOP ADJUSTING.....	1
16	PAOZZ	61080	50052000	•SCREW,ALLEN.....	2
17	XDOZA	61080	50016700	•WASHER.....	2
18	XDOZZ	61080	00720400	•CONSOLE THROTTLE.....	1

END OF FIGURE

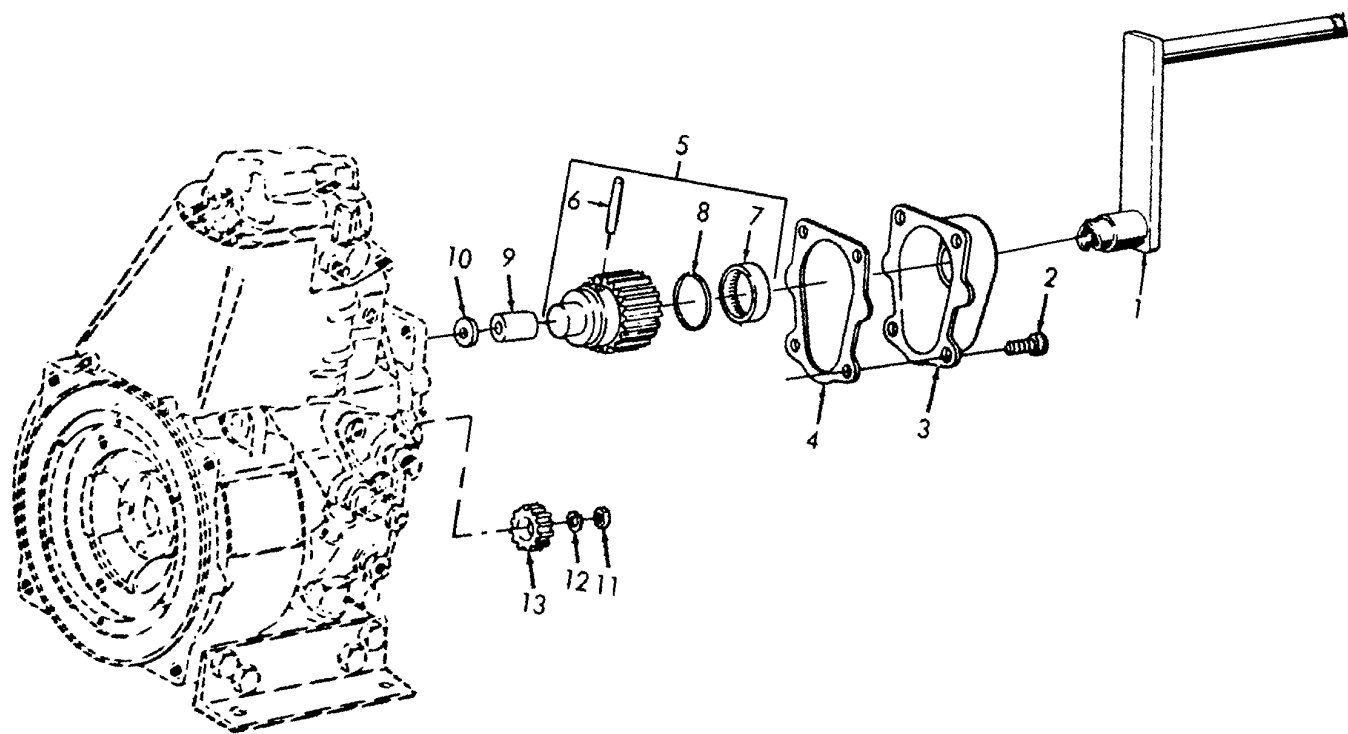


Figure 9. Crank Assembly, Cover and Gears.

(1) ITEM NO	(2) SMR CODE	(3) FSCM	(4) PART NUMBER	(5) DESCRIPTION AND USABLE ON CODES(UOC)	(6) QTY
GROUP 02 ENGINE ASSEMBLY					
FIG. 9 CRANK ASSEMBLY, COVER AND GEARS					
1	PBOZZ	61080	00315000	•HANDLE,STARTING	1
2	PAFZZ	61080	50053400	•SCREW,ALLEN.....	4
3	XDFZZ	61080	00313701	•HOUSING	1
4	KFFZZ	61080	03210000	•GASKET PART OF KIT P/N 01229700	1
5	PBFFZ	61080	00410611	•GEARWHEEL.....	1
6	PAFZZ	61080	03262000	••PIN.....	1
7	PAFZZ	61080	40019000	••SHELL,NEEDLE.....	1
8	KFFZZ	61080	50252400	••SEAL OIL PART OF KIT P/N 01229700.....	1
9	PBFZZ	61080	40032900	•BUSHING,SLEEVE.....	1
10	PAFZZ	61080	40001300	•DISC,WASHER	1
11	PAFZZ	61080	50024500	•NUT,PLAIN,HEXAGON.....	1
12	PAFZZ	61080	50003200	•WASHER,LOCK	1
13	PDFZZ	61080	03112410	•PINION	1

END OF FIGURE

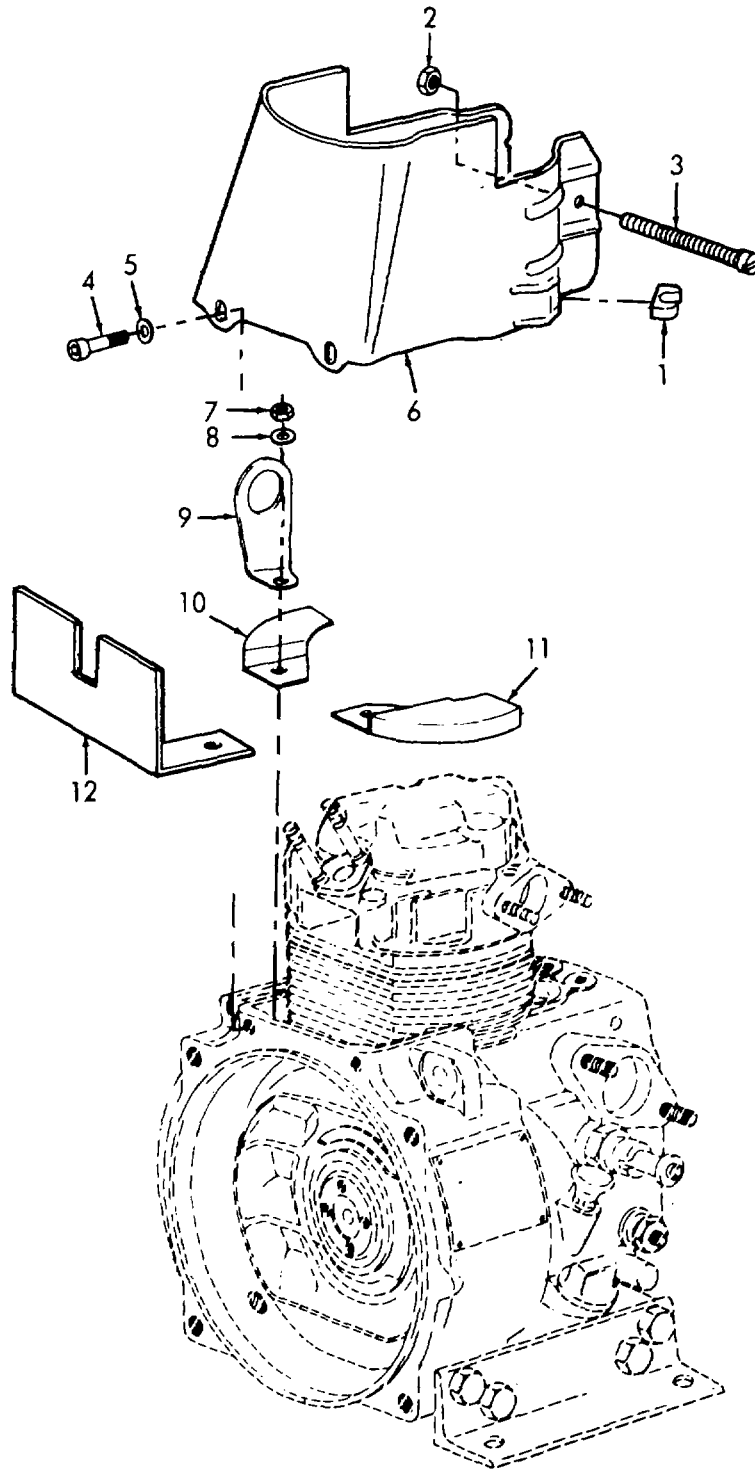


Figure 10. Cowling and Covers.

(1) ITEM NO	(2) SMR CODE	(3) FSCM	(4) PART NUMBER	(5) DESCRIPTION AND USABLE ON CODES(UOC)	(6) QTY
GROUP 02 ENGINE ASSEMBLY					
FIG. 10 COWLING AND COVERS					
1	PBOZZ	61080	03150900	•CLAMP	1
2	PBOZA	61080	40028200	•NUT,SELF-LOCKING,HE.....	1
3	PBOZA	61080	50050100	•SCREW,MACHINE	1
4	PBOZZ	61080	50051600	•SCREW,CAP,SOCKET HE.....	2
5	PAOZA	61080	50016700	•WASHER.....	2
6	XDOZZ	61080	03066601	•SHROUD	1
7	PAFZZ	61080	50023400	•NUT,PLAIN,HEXAGON.....	1
8	PAFZA	61080	50003500	•WASHER,SPRING TENSI.....	1
9	XDFZZ	61080	03457800	•LIFTING EYE.....	1
10	XDFZZ	61080	03066501	•COVER.....	1
11	XDFZZ	61080	03066401	•COVER.....	1
12	XDFZZ	61080	03492900	•SUPPORT	1

END OF FIGURE

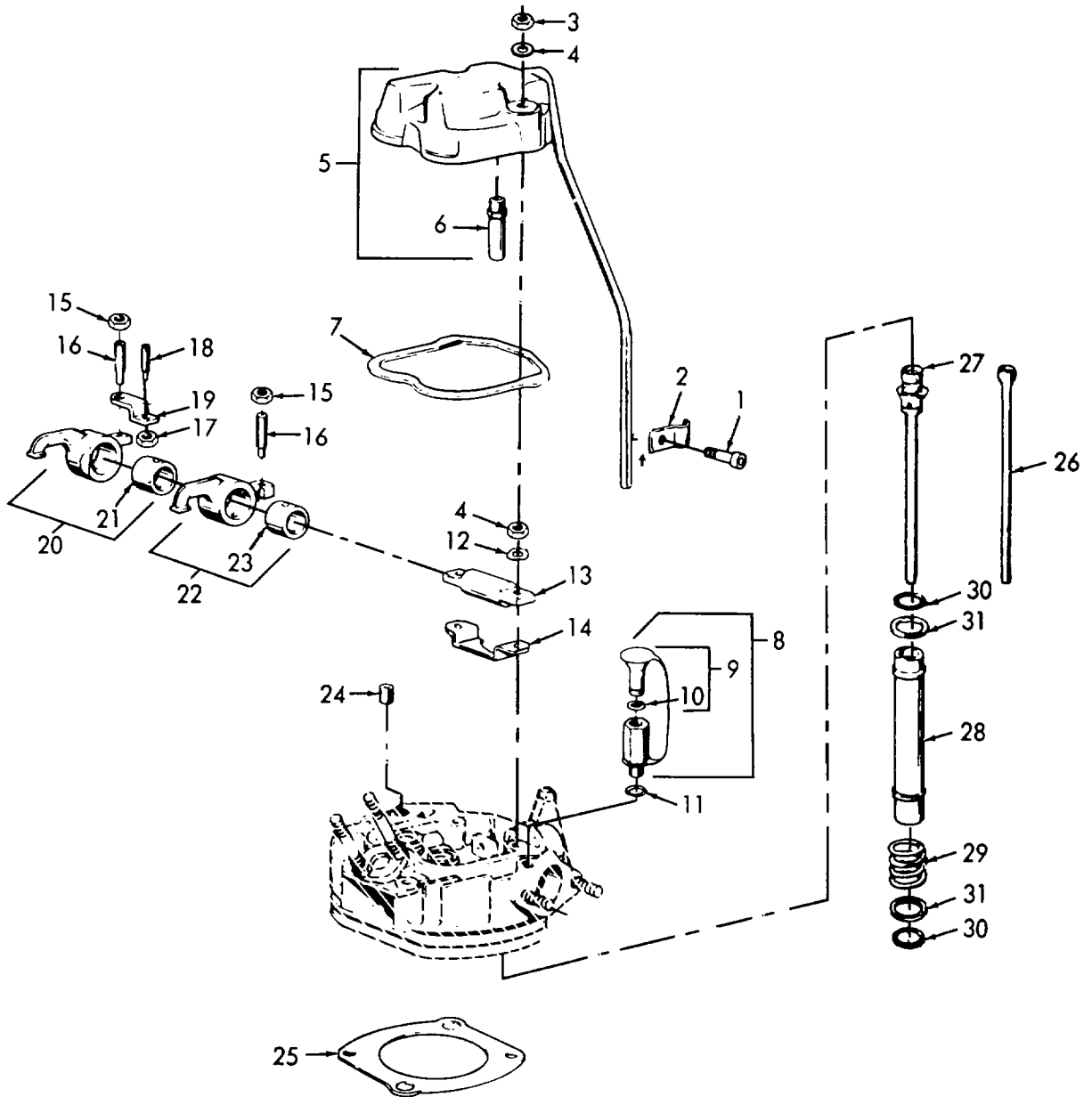


Figure 11. Rocker Arms.

(1) ITEM NO	(2) SMR CODE	(3) FSCM	(4) PART NUMBER	(5) DESCRIPTION AND USABLE ON CODES(UOC)	(6) QTY
GROUP 02 ENGINE ASSEMBLY					
FIG. 12 ROCKER ARMS					
1	PAFZZ	61080	50053400	•SCREW,ALLEN.....	1
2	XDFZZ	61080	03091500	•CLAMP.....	1
3	PAFZZ	61080	050023400	•NUT PLAIN HEX.....	5
4	PAFZA	61080	50003500	•WASHER,SPRING TENSI.....	5
5	XDFZZ	61080	00313802	•COVER VALVE.....	1
6	XAFZZ	61080	00362004	••TUBE BREATHER.....	1
7	KFFZZ	61080	03208902	•GASKET VALVE COVER PART OF KIT P/N..... 00910610.....	1
8	PBFFO	61080	00361801	•CUP ASSEMBLY,CYLIND.....	1
9	PAFZZ	61080	00736300	••CAP.....	1
10	KFFZA	61080	50154100	•••PACKING,PREFORMED.....	1
11	KFFZZ	61080	5001100	•PACKING PREFORMED PART OF KIT P/N..... 00910610 PART OF KIT P/N 01229700.....	1
12	XDFZZ	61080	03766300	•WASHER PART OF KIT P/N 01229700.....	4
13	XDFZZ	61080	03061501	•SHAFT ROCKER ARM.....	1
14	XDFZZ	61080	03092500	•CLAMP.....	1
15	XDFZZ	61080	03173100	•NUT PLAIN HEXX.....	2
16	XDFZZ	61080	03003700	•SCREW ADJUSTING.....	2
17	XDFZA	61080	50022700	•NUT,PLAIN,HEXAGON.....	1
18	XDFZZ	61080	03022001	•SCREW ADJUSTING.....	1
19	XDFZZ	61080	03060002	•CLAMP.....	1
20	XDFZZ	61080	00614201	•ROCKER ARM.....	1
21	XDFZZ	61080	03430101	•BUSHING.....	1
22	XDFZZ	61080	00614301	•ROCKER ARM.....	1
23	XDFZZ	61080	03430101	••BUSHING.....	1
24	XDFZZ	61080	50043700	•SCREW.....	1
25	KFFZZ	61080	03770300	•GASKET 0.30 MM.....	1
25	KFFZA	61080	03581800	•GASKET PART OF KIT P/N 00910610.....	1
25	PFFZA	61080	03581900	•GASKET.....	1
25	KFFZA	61080	03582000	•GASKET PART OF KIT P/N 00910610.....	1
25	KFFZA	61080	03582100	•GASKET.....	1
25	KFFZA	61080	03582200	•GASKET.....	1
26	XDFZZ	61080	03063901	•ROD PUSH.....	1
27	XDFZZ	61080	00902600	•ROD PUSH.....	1
28	XDFZZ	61080	03209002	•TUBE PUSH ROD.....	2
29	XDFZZ	61080	03185100	•SPRING.....	2
30	KFFZZ	61080	50258000	•PACKING PREFORMED PART OF KIT P/N..... 0091061.....	4
31	XDFZZ	61080	03209101	•SHIM.....	4

END OF FIGURE

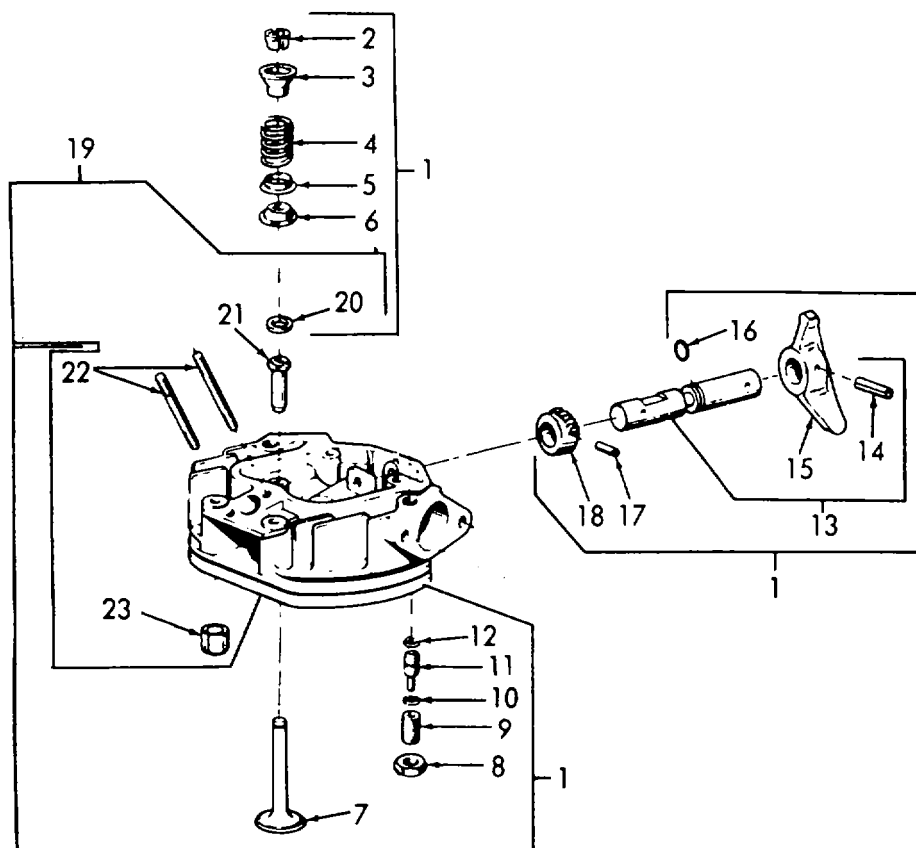


Figure 12. Cylinder Head and Valve Assembly.

(1) ITEM NO	(2) SMR CODE	(3) FSCM	(4) PART NUMBER	(5) DESCRIPTION AND USABLE ON CODES(UOC)	(6) QTY
GROUP 02 ENGINE ASSEMBLY					
FIG. 12 CYLINDER HEAD AND VALVE ASSEMBLY					
1	PBFHH	61080	00907601	●CYLINDER HEAD ASSEM.....	1
2	XDHZZ	61080	03171910	●●COLLET	2
3	XDHZZ	61080	03060501	●●CUP	2
4	XDHZZ	61080	03208100	●●SPRING	2
5	XDHZZ	61080	03208400	●●WASHER	2
6	XDHZZ	61080	03208001	●●CAP	2
7	XDHZZ	61080	03569820	●●VALVE	2
8	XDHZZ	61080	50023800	●●NUT PLAIN HEXAGON	1
9	XDHZZ	61080	03061100	●●PIN THREADED.....	1
10	XDHZZ	61080	50042600	●●PLATE SPRING	1
11	XDHZZ	61080	03063800	●●PIN.....	1
12	KFHZA	61080	50154200	●●PACKING,PREFORMED.....	1
13	XDHZZ	61080	00746800	●●LEVER ASSEMBLY	1
14	XDHZZ	61080	50034600	●●●PIN	1
15	XDHZZ	61080	03173401	●●●LEVER.....	1
16	KFHZZ	61080	50154300	●●PACKING PREFORMED PART OF KIT P/N..... 00910610	1
17	XDHZZ	61080	50034100	●●PIN.....	1
18	XDHZZ	61080	03570600	●●PINION.....	1
19	XDHHZ	61080	00740121	●●CYLINDER HEAD	1
20	XDHZZ	61080	03753800	●●●SPACER RING.....	2
21	XDHZZ	61080	03208210	●●●GUIDE VALVE.....	2
22	XDHZA	61080	50111000	●●●STUD,PLAIN	2
23	XDHZZ	61080	50035700	●●●PIN	2
	PAFZZ	61080	00910610	●GASKET SET	1
				GASKET (1) 4-3	
				GASKET (2) 6-9	
				GASKET (1) 7-7	
				GASKET (1) 11-25	
				GASKET (1) 11-25	
				GASKET VALVE COVER (1) 11-7	
				PACKING PREFORMED (1) 11-11	
				PACKING PREFORMED (4) 11-30	
				PACKING PREFORMED (1) 12-16	

END OF FIGURE

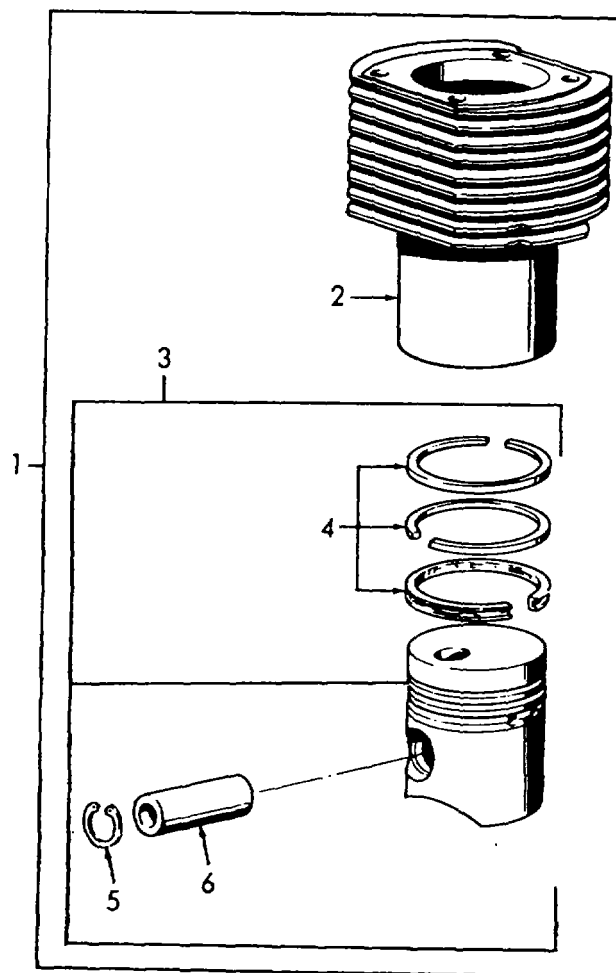


Figure 13. Cylinder and Piston.

(1) ITEM NO	(2) SMR CODE	(3) FSCM	(4) PART NUMBER	(5) DESCRIPTION AND USABLE ON CODES(UOC)	(6) QTY
GROUP 02 ENGINE ASSEMBLY					
FIG. 13 CYLINDER AND PISTON					
1	PBFFF	61080	00912700	●CYLINDER WITH PISTO.....	1
2	XDFZZ	61080	03583300	●●CYLINDER.....	1
3	XDFFF	61080	00904100	●●PISTON ASSY.....	1
4	PBFZA	61080	00904300	●●●RING SET,PISTON.....	1
5	PBFZA	61080	50020600	●●●RING,RETAINING.....	2
6	PBFZZ	61080	50107500	●●●PIN.....	1

END OF FIGURE

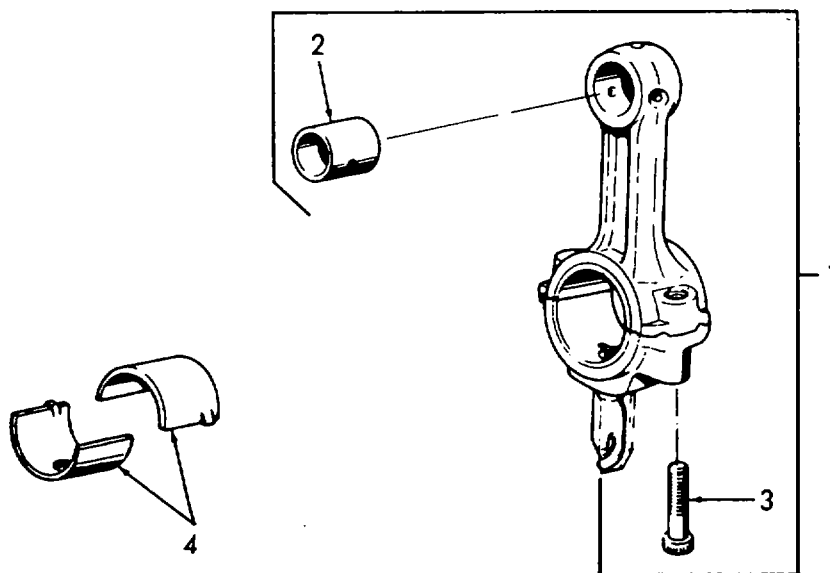


Figure 14. Connecting Rod.

(1) ITEM NO	(2) SMR CODE	(3) FSCM	(4) PART NUMBER	(5) DESCRIPTION AND USABLE ON CODES(UOC)	(6) QTY
GROUP 02 ENGINE ASSEMBLY					
FIG. 14 CONNECTING ROD					
1	XDHHH	61080	00361300	•ROD CONNECTING	1
2	PBHZA	61080	03206900	••BEARING,SLEEVE	1
3	XDHZZ	61080	03393700	••SCREW ALLEN HEAD	2
4	PBHZA	61080	03206700	•BEARING,SLEEVE	1
END OF FIGURE					

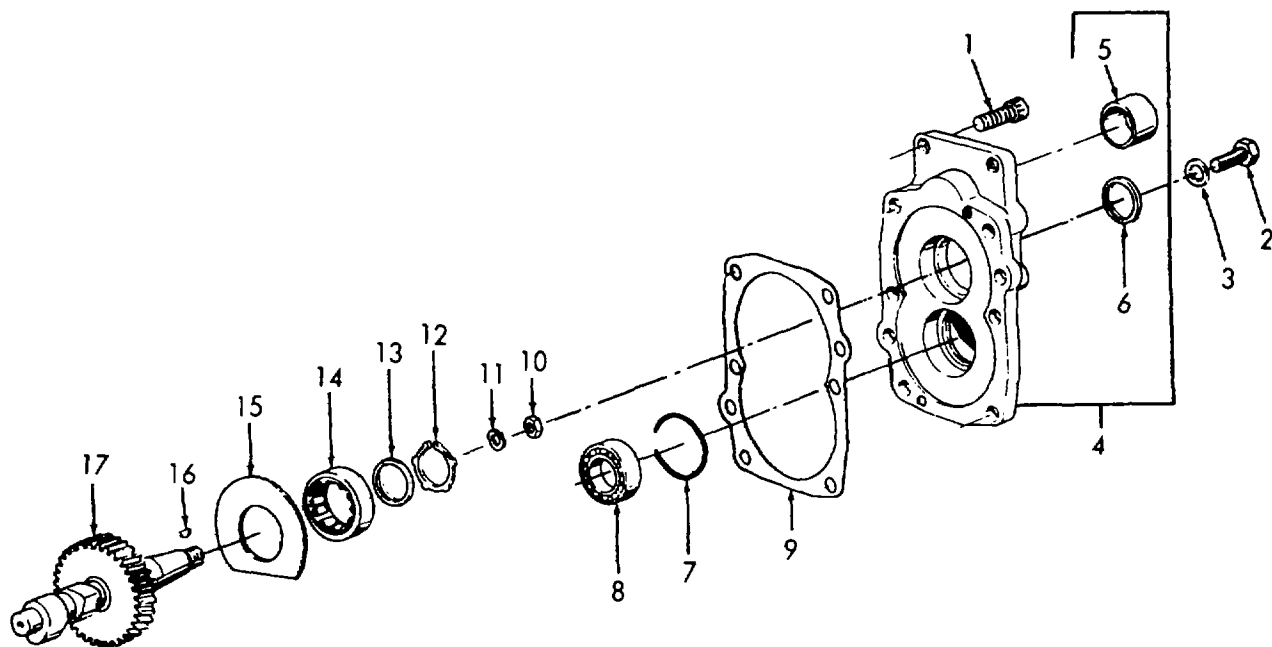


Figure 15. Timing Cover and Camshaft.

SECTION II

TM 5-4320-313-24P

(1)	(2)	(3)	(4)	(5)	(6)
ITEM NO	SMR CODE	FSCM	PART NUMBER	DESCRIPTION AND USABLE ON CODES(UOC)	QTY
GROUP 02 ENGINE ASSEMBLY					
FIG. 15 TIMING COVER AND CAMSHAFT					
1	XDHZZ	61080	50053800	•SCREW MACHINE	2
2	XDHZA	61080	50029200	•BOLT,MACHINE	4
3	XDHZA	61080	50001000	•GASKET	5
4	XDHHH	61080	00362310	•COVER TIMING	1
5	PAHZZ	61080	40032900	••BUSHING,SLEEVE	1
6	KFHZA	61080	40033700	••SEAL,PLAIN ENCASED PART OF KIT P/N	1
				01229700	
7	XDHZZ	61080	03612400	•RING INTERIM	2
8	PBHZZ	61080	50012900	•BEARING,BALL,ANNULA	1
9	KFHZA	61080	03209202	•GASKET PART OF KITP/N 01229700	1
10	XDHZZ	61080	50024500	•NUT, PLAIN HEX	1
11	XDHZZ	61080	50003200	•WASHER LOCK	1
12	XDHZZ	61080	40037900	•RING RETAINING	1
13	XDHZZ	61080	03278000	•WHEEL FLANGED	1
14	XDHZZ	61080	50062200	•BEARING BALL	1
15	XDHZZ	61080	03209300	•SPACER.....	1
16	XDHZZ	61080	50017900	•KEY WOODRUFF	1
17	XDHZZ	61080	0343000	•CAMSHAFT	1

END OF FIGURE

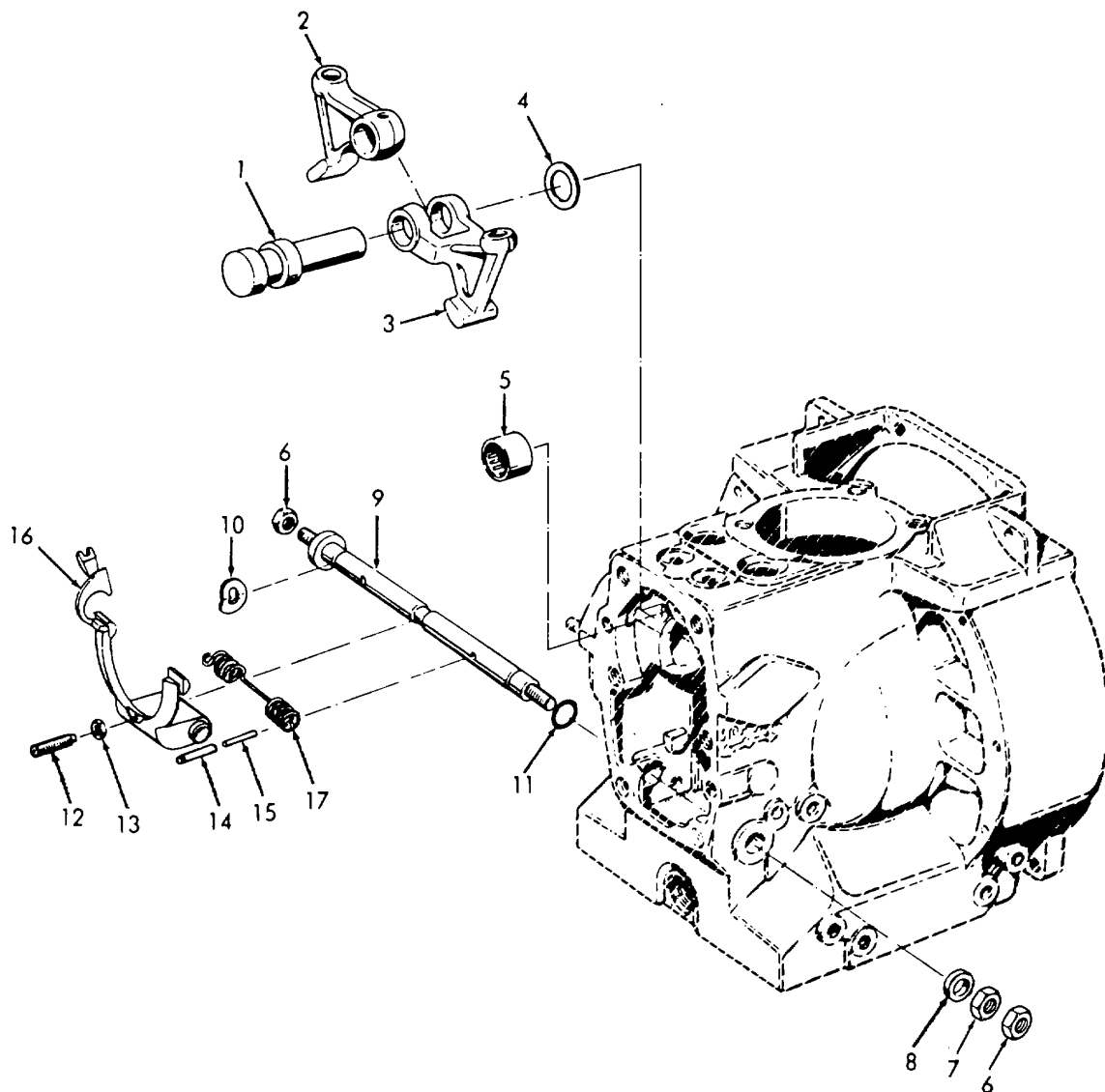


Figure 16. Governor.

SECTION II

TM 5-4320-313-24P

(1)	(2)	(3)	(4)	(5)	(6)
ITEM NO	SMR CODE	FSCM	PART NUMBER	DESCRIPTION AND USABLE ON CODES(UOC)	QTY
GROUP 02 ENGINE ASSEMBLY					
FIG. 16 GOVERNOR					
1	XDHZZ	61080	03059700	•SPINDLE FOLLOWER	1
2	XDHZZ	61080	03063401	•FOLLOWER CAM	1
3	XDHZZ	61080	03063301	•FOLLOWER CAM	1
4	XDHZZ	61080	03169800	•SHIM	1
5	XDHZZ	61080	40036800	•BEARING NEEDLE	1
6	XDHZZ	61080	50023500	•NUT PLAIN HEX	2
7	XDHZZ	61080	03206100	•NUT PLAIN HEX	1
8	XDHZZ	61080	03146200	•DISC FRICTION	1
9	XDHZZ	61080	00427303	•SHAFT	1
10	XDHZZ	61080	50003600	•WASHER SPRING	1
11	KFHZA	61080	40022300	•PACKING, PREFORMED PART OF KIT P/N.....	2
				01229700	
12	XDHZZ	61080	50004200	•SET SCREW	1
13	XDHZA	61080	50022700	•NUT,PLAIN,HEXAGON	1
14	XDHZZ	61080	50034900	•PIN	2
15	XDHZZ	61080	50034300	•PIN	2
16	XDHZZ	61080	00308704	•LEVER GOVERNOR	1
17	XDHZZ	61080	03205703	•SPRING GOVERNOR	1

END OF FIGURE

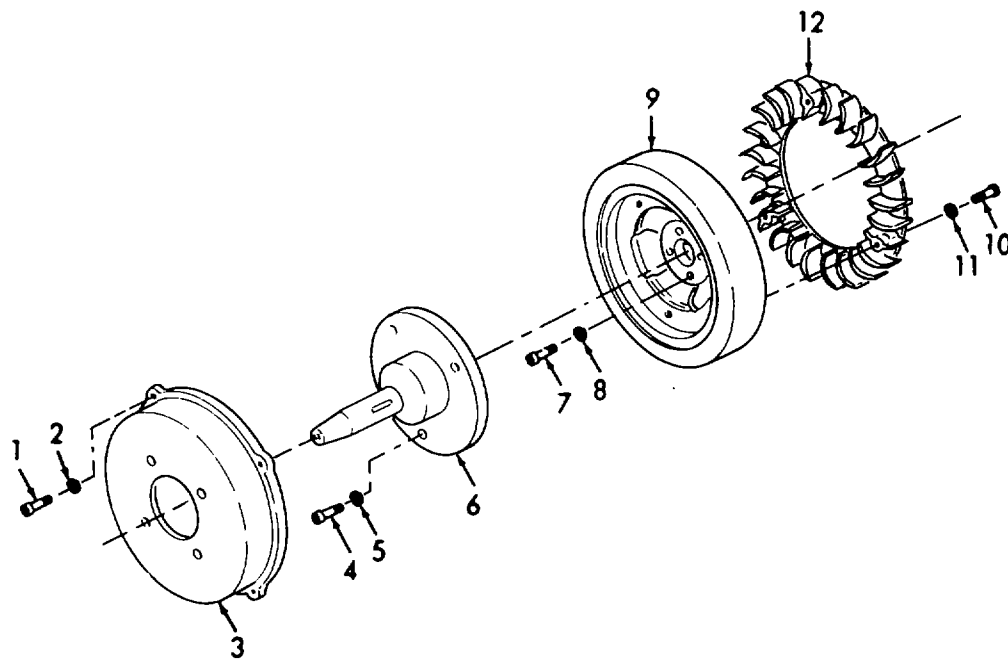


Figure 17. Flywheel.

SECTION II

TM 5-4320-313-24P

(1)	(2)	(3)	(4)	(5)	(6)
ITEM NO	SMR CODE	FSCM	PART NUMBER	DESCRIPTION AND USABLE ON CODES(UOC)	QTY
GROUP 02 ENGINE ASSEMBLY					
FIG. 17 FLYWHEEL					
1	XDFZZ	61080	50054100	•SCREW MACHINE	4
2	XDFZA	61080	50002900	•WASHER,LOCK	4
3	XDFZZ	61080	03897400	•HOUSING	1
4	XDFZZ	61080	50056200	•SCREW MACHINE	3
5	XDFZZ	61080	50061600	•WASHER LOCK	3
6	XDFZZ	61080	03907100	•SHAFT STUB	1
7	XDFZZ	61080	50054500	•SCREW MACHINE	4
8	XDFZA	61080	50002900	•WASHER,LOCK	4
9	XDFZZ	61080	03063201	•FLYWHEEL	1
10	XDFZZ	61080	40035600	•SCREW MACHINE	6
11	XDFZZ	61080	40027800	•WASHER.....	6
12	XDFZZ	61080	00635000	•RING BLOWER	1

END OF FIGURE

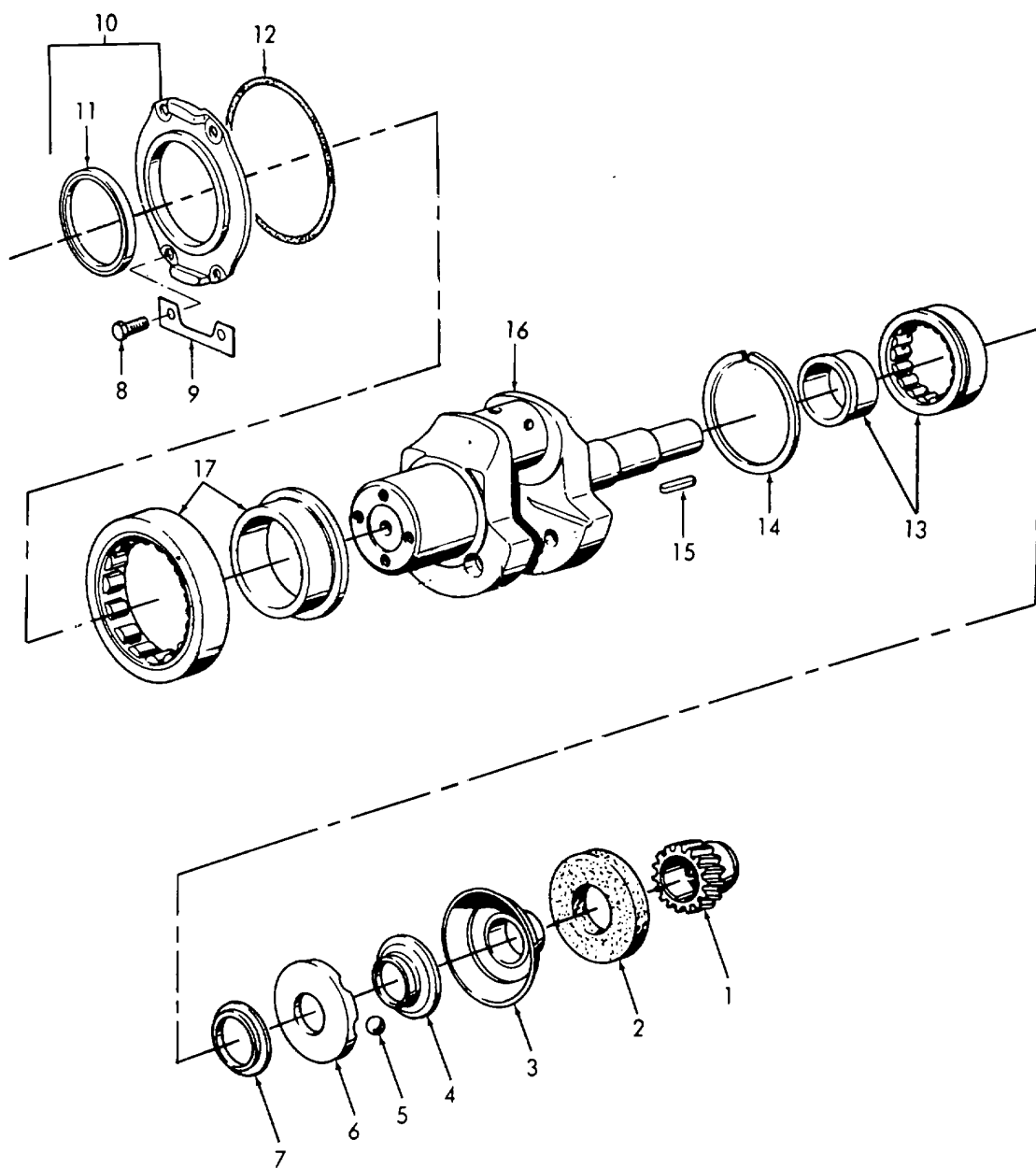


Figure 18. Crankshaft.

SECTION II

TM 5-4320-313-24P

(1)	(2)	(3)	(4)	(5)	(6)
ITEM NO	SMR CODE	FSCM	PART NUMBER	DESCRIPTION AND USABLE ON CODES(UOC)	QTY
				GROUP 02 ENGINE ASSEMBLY	
				FIG. 18 CRANKSHAFT	
1	XDHZZ	61080	03064801	•GEAR	1
2	XDHZZ	61080	03004501	•DISC	1
3	XDHZZ	61080	00742000	•SHELL BALL	1
4	XDHZZ	61080	03170001	•DISC	1
5	XDHZZ	61080	50010000	•BALL.....	4
6	XDHZZ	61080	03006602	•HUB BALL	1
7	XDHZZ	61080	03206600	•SPACER.....	1
8	XDHZZ	61080	50025500	•SCREW	4
9	XDHZZ	61080	03205901	•PLATE	2
10	XDHHH	61080	00563001	•COVER.....	1
11	KFHZA	61080	40034200	•SEAL, PLAIN ENCASED PART OF KIT P/N.....	1
				01229700	
12	KFHZA	61080	50154000	•PACKING, PREFORMED PART OF KIT P/N.....	1
				01229700	
13	XDHZZ	61080	50047700	•BEARING	1
14	XDHZZ	61080	50036200	•RING RETAINING	1
15	XDHZZ	61080	50011100	•KEY	1
16	XDHZZ	61080	00361202	•CRANKSHAFT.....	1
17	XDHZZ	61080	50047100	•BEARING	1

END OF FIGURE

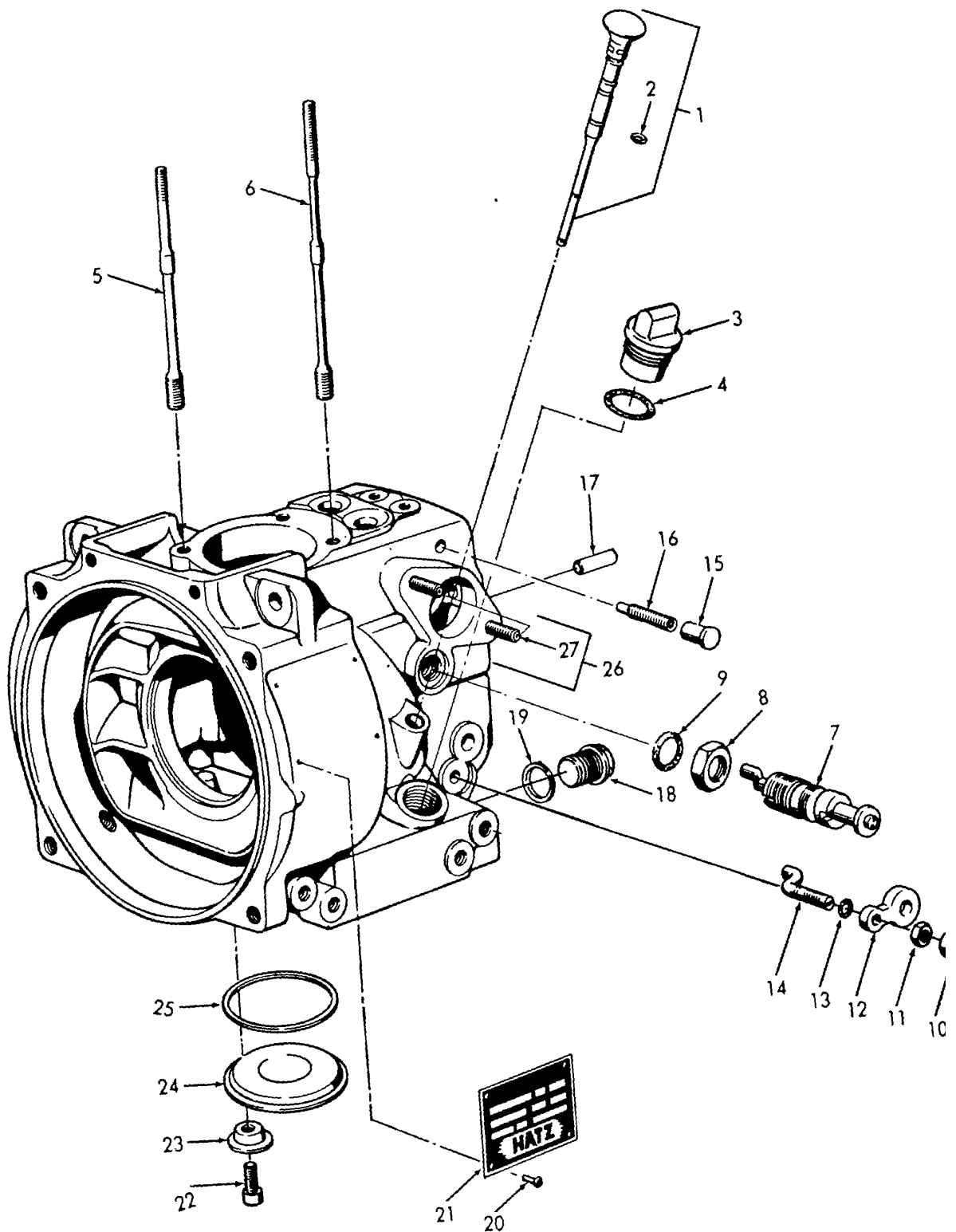


Figure 19. Crankcase

SECTION II

TM 5-4320-313-24P

(1)	(2)	(3)	(4)	(5)	(6)
ITEM NO	SMR CODE	FSCM	PART NUMBER	DESCRIPTION AND USABLE ON CODES(UOC)	QTY
				GROUP 02 ENGINE ASSEMBLY	
				FIG. 19 CRANKCASE	
1	XDOZZ	61080	00308802	•DIPSTICK	1
2	KFOZZ	61080	40022000	••PACKING PREFORMED PART OF KIT P/N..... 01229700	1
3	XDOZZ	61080	03069004	•CAP OIL FILL	1
4	KFOZA	61080	50153800	•PACKING, PREFORMED PART OF KIT P/N..... 01229700	1
5	PBHZA	61080	03207701	•STUD, RECESSED AND S	2
6	PBHZA	61080	03207600	•STUD, RECESSED AND S	2
7	XDHZZ	61080	00362400	•DEVICE EXTRA FUEL	1
8	XDHZZ	61080	50024600	•NUT PLAIN HEXAGON	1
9	KFHZA	61080	40022800	•PACKING, PREFORMED PART OF KIT P/N..... 01229700	1
10	XDHZZ	61080	03205800	•CAP	1
11	XDHZZ	61080	50022900	•NUT,PLAIN,HEXAGON	1
12	XDHZZ	61080	03104901	•PLATE	1
13	KFHZZ	61080	40021700	•GASKET PART OF KIT P/N 01229700	1
14	XDHZZ	61080	03060403	•PIN ECCENTRIC	1
15	XDHZZ	61080	40039701	•PLUG	1
16	XDHZZ	61080	50062100	•SETSCREW	1
17	XDHZZ	61080	03169300	•PIN	2
18	PBOZZ	61080	03169103	•PLUG, MACHINE THREAD	1
19	KFOZZ	61080	50001500	•PACKING PREFORMED PART OF KIT P/N..... 01229700	1
20	XDHZZ	61080	40002500	•RIVET	4
21	XDHZZ	61080	03639600	•NAMEPLATE	1
22	XDHZZ	61080	50050400	•SCREW MACHINE	4
23	XDHZZ	61080	03206200	•CAP	4
24	XDHZZ	61080	03205602	•COVER	1
25	KFHZA	61080	40023800	•PACKING, PREFORMED PART OF KIT P/N..... 01229700	1
26	XDHHZ	61080	03611800	•CRANKCASE	1
27	XDHZA	61080	50037300	••STUD, PLAIN	2
	PAFZZ	61080	01229700	GASKET SET CRANKCASE	1
				GASKET (2) 6-9	
				GASKET (1) 9-4	
				GASKET (1) 15-9	
				GASKET (1) 19-13	
				PACKING PREFORMED (1) 11-11	
				PACKING PREFORMED (1) 19-2	
				PACKING PREFORMED (1) 19-19	
				PACKING,PREFORMED (2) 16-11	
				PACKING,PREFORMED (1) 18-12	
				PACKING,PREFORMED (1) 19-4	
				PACKING,PREFORMED (1) 19-9	
				PACKING,PREFORMED (1) 19-25	
				SEAL OIL (1) 9-8	
				SEAL,PLAIN ENCASED (1) 15-6	
				SEAL,PLAIN ENCASED (1) 18-11	

SECTION II

TM 5-4320-313-24P

(1)	(2)	(3)	(4)	(5)	(6)
ITEM NO	SMR CODE	FSCM	PART NUMBER	DESCRIPTION AND USABLE ON CODES(UOC)	QTY

				WASHER	(4) 11-12
				WASHER,SEALING	(1) 5-25

END OF FIGURE

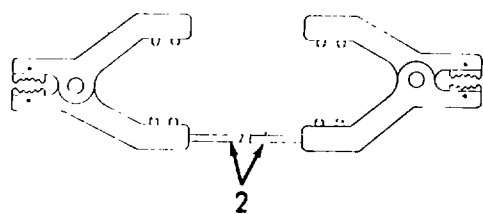
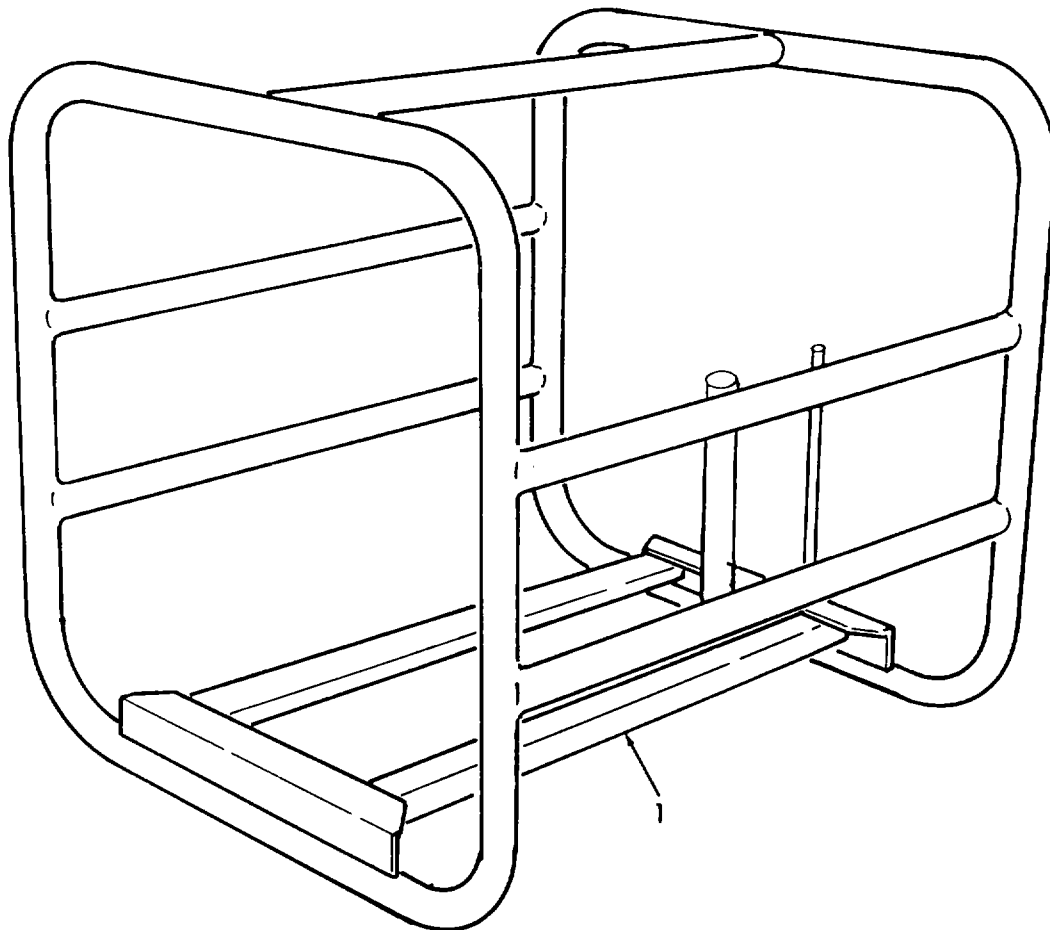


Figure 20. Frame.

SECTION II

TM 5-4320-313-24P

(1)	(2)	(3)	(4)	(5)	(6)
ITEM NO	SMR CODE	FSCM	PART NUMBER	DESCRIPTION AND USABLE ON CODES(UOC)	QTY

GROUP 03 FRAME ASSEMBLY

FIG. 20 FRAME

1	XDFZZ	IU339	PAF-11	FRAME	1
2	PBOZZ	97403	13220E1127	LEAD, ELECTRICAL	1

END OF FIGURE

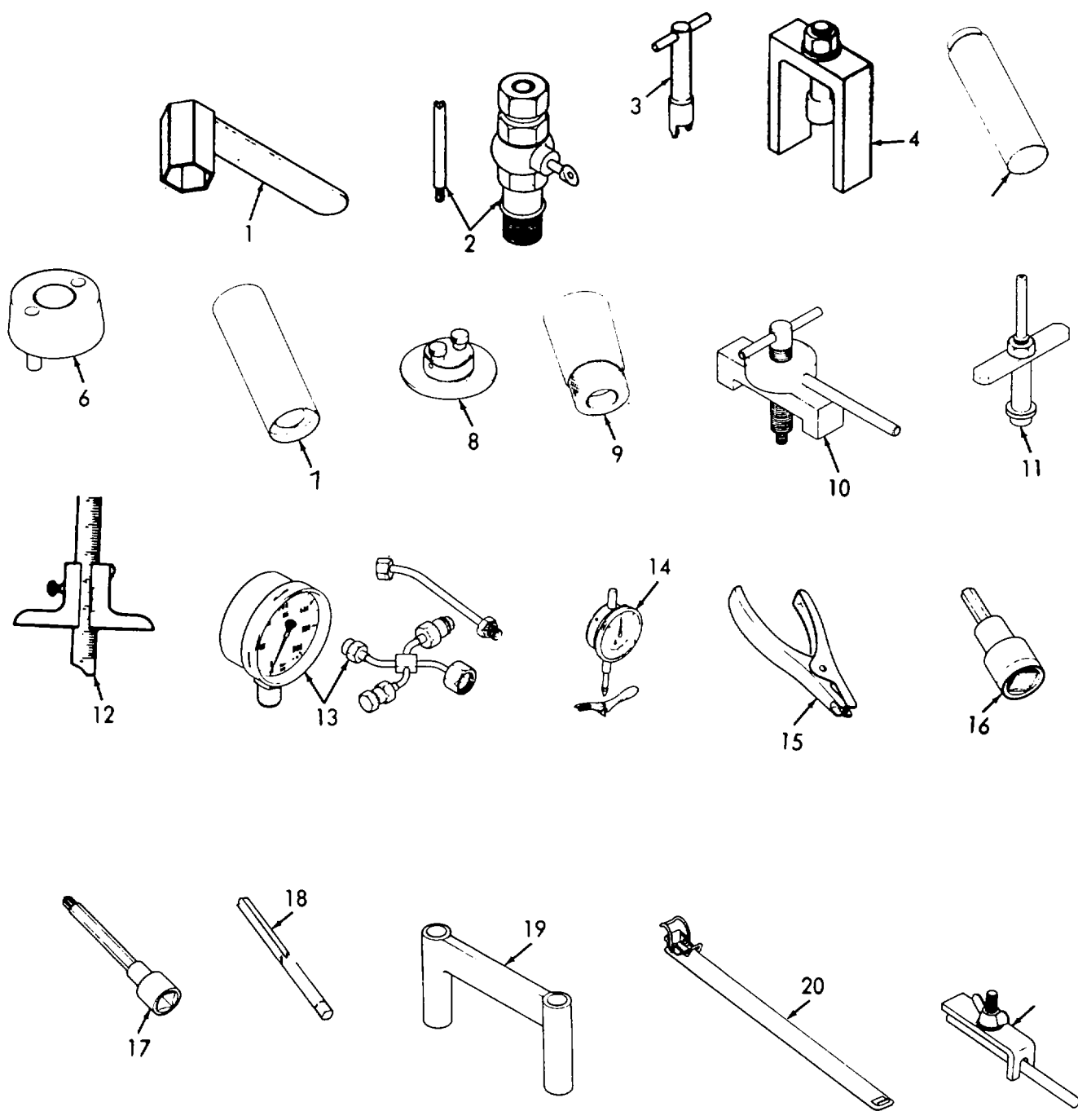


Figure 21. Special Tools.

SECTION III

TM 5-4320-313-24P

(1)	(2)	(3)	(4)	(5)	(6)
ITEM NO	SMR CODE	FSCM	PART NUMBER	DESCRIPTION AND USABLE ON CODES(UOC)	QTY
				GROUP 04	SPECIAL TOOLS
				FIG. 21	SPECIAL TOOLS
1	PBFZZ	61080	66833500	WRENCH, SOCKET.....	
2	PBFZZ	61080	66503001	SPILL DEVICE	
3	PBFZZ	61080	60600000	WRENCH SPECIAL	
4	PBHZZ	61080	61816800	PULLER, MECHANICAL	
5	PBFZZ	61080	66606700	MANDREL, IMPACT, BALL	
6	PBFZZ	61080	66606800	SUPPORT BUSHING, OIL.	
7	PBHZZ	61080	66606900	MANDREL, IMPACT, GEAR.....	
8	PBHZZ	61080	66607400	MOUNTING DEVICE, CRA	
9	PBFZZ	61080	66607500	BUSHING TIMING	
10	PBFZZ	61080	66632400	PULLER, MECHANICAL	
11	PBHZZ	61080	66641800	MOUNT, CAMSHAFT	
12	PBFZZ	61080	61311401	DEPTH GAUGE	
13	PBFZZ	61080	60462800	DEVICE, TESTING.....	
14	PBFZZ	61080	61208700	GAGE, DIAL.....	
15	PBFZZ	61080	61209000	PLIERS, PISTON RING.....	
16	PBFZZ	61080	61209100	SOCKET WRENCH ATTAC	
17	PBFZZ	61080	61209900	SOCKET, SCREW	
18	PBFZZ	61080	61210700	REAMER, HAND.....	
19	PBFZZ	61080	61275200	BRACKET, RETAINING	
20	PBHZZ	61080	66634600	CLAMP, PISTON RING	
21	PBFZZ	61080	66838300	CLAMP, FUEL SHUTOFF	

END OF FIGURE

CROSS-REFERENCE INDEXES
NATIONAL STOCK NUMBER INDEX

STOCK NUMBER	FIG.	ITEM	STOCK NUMBER	FIG.	ITEM
5315-00-043-1787	1	20	5310-01-101-2028	5	28
4730-00-088-9285	1	8	5330-01-101-8076	5	17
4730-00-188-3515	1	7	5120-01-102-1670	21	16
5306-00-225-9089	1	11	4730-01-103-3204	5	16
5305-00-269-3211	1	3	4320-01-106-5591	1	10
	3	3	5365-01-127-2264	1	14
4730-00-287-2182	1	6	5330-01-148-0218	2	10
5330-00-291-3272	1	17	6150-01-197-6335	20	2
5340-00-291-3492	1	21	4720-01-244-3573	5	13
4320-00-559-1517	1	13	5310-01-264-6201	2	5
4320-00-559-1518	1	12	5305-01-264-6222	5	1
4320-00-564-9061	1		5340-01-264-6223	5	3
5315-00-730-4563	1	16	5365-01-264-6224	5	4
5310-00-732-0558	1	1	4330-01-264-6225	5	12
	3	1	5305-01-264-6226	5	5
5305-00-912-5113	1	4		7	1
4730-00-938-7997	1	9	5305-01-264-6227	5	7
5330-01-017-8352	1	15	5340-01-264-6228	5	8
2815-01-068-3790	13	4	5310-01-264-6229	5	25
5305-01-069-8897	10	3	5310-01-264-6230	5	27
5307-01-070-2148	19	5	5310-01-264-6234	6	5
5365-01-070-2325	13	5	2910-01-264-6235	6	7
5307-01-070-6470	19	6	5310-01-264-6236	4	1
5310-01-070-7115	9	11		7	5
5307-01-071-1326	4	4	5305-01-264-6237	9	2
5310-01-073-9220	8	3		11	1
5310-01-074-1498	5	20	2910-01-264-6238	9	7
	8	8	5310-01-264-6239	9	10
	10	8	2990-01-264-6240	9	1
	11	4	5310-01-264-6241	8	6
5330-01-074-2106	11	25	5310-01-264-6242	8	7
5306-01-074-6815	3	5	5305-01-264-6243	8	11
5310-01-077-6796	9	12	5305-01-264-6244	8	12
5330-01-078-4508	6	11	5310-01-264-6246	8	13
5310-01-079-9886	10	5	5305-01-264-6247	8	16
5310-01-080-0025	6	6	2815-01-264-6275	3	4
5310-01-080-0033	10	2	5330-01-264-6286	5	22
3110-01-080-0056	15	8	5330-01-264-6287	7	7
5330-01-080-1776	6	9	4820-01-264-6294	6	10
3120-01-080-3017	14	2	5365-01-264-6330	6	11
3120-01-080-3018	14	4	5365-01-264-6331	6	11
5305-01-080-4903	10	4	5365-01-264-6332	6	11
5310-01-080-4987	10	7	2910-01-264-6337	5	21
5310-01-080-4999	3	6	2910-01-264-6339	6	4
5310-01-081-0142	6	1	4710-01-264-6340	6	3
	8	1	2940-01-264-6347	2	8
5330-01-082-6176	6	11	2940-01-264-6353	2	1
5310-01-084-8136	2	4	2815-01-265-1752	11	8
5310-01-100-5204	5	19	2815-01-265-1753	12	1
5365-01-100-7392	5	6	2815-01-265-1754	13	1

CROSS-REFERENCE INDEXES
NATIONAL STOCK NUMBER INDEX

STOCK NUMBER	FIG.	ITEM	STOCK NUMBER	FIG.	ITEM
5210-01-265-1804	21	13			
5120-01-265-1805	21	15			
5120-01-265-1807	21	17			
5110-01-265-1808	21	19			
5120-01-265-1810	21	5			
5120-01-265-1811	21	6			
5120-01-265-1812	21	7			
5120-01-265-1813	21	8			
5120-01-265-1814	21	9			
5120-01-265-1815	21	20			
5120-01-265-1816	21	11			
5120-01-265-1818	21	21			
5120-01-265-1918	21	1			
5110-01-265-1934	21	18			
3120-01-265-1945	9	9			
	15	5			
5120-01-265-1967	21	4			
5120-01-265-1968	21	10			
5307-01-267-2308	5	23			
2815-01-267-2310	5	33			
5210-01-269-2717	21	14			
2990-01-282-2567	7	6			
4330-01-282-5169	2	3			
5365-01-282-5670	5	18			
5306-01-282-8177	5	24			
5365-01-283-1563	19	18			
5330-01-285-4889	12				

CROSS-REFERENCE INDEXES

PART NUMBER INDEX

FSCM	PART NUMBER	STOCK NUMBER	FIG.	ITEM
00736	A198638-33		2	6
61080	E673LHK-241	2815-01-264-6275	3	4
96906	MS124698	5340-00-291-3492	1	21
96906	MS20066-141	5315-00-730-4563	1	16
96906	MS20913-4	4730-00-188-3515	1	7
96906	MS20913-8	4730-00-287-2182	1	6
96906	MS27022-11	4730-00-938-7997	1	9
96906	MS27026-11	4730-00-088-9285	1	8
96906	MS29513-270	5330-00-291-3272	1	17
96906	MS35338-46		1	2
			3	2
96906	MS35756-34	5315-00-043-1787	1	20
96906	MS51096-359	5305-00-912-5113	1	4
96906	MS51967-8	5310-00-732-0558	1	1
			3	1
96906	MS90725-60	5305-00-269-3211	1	3
			3	3
96906	MS90726-34	5306-00-225-9089	1	11
IU339	PAF-111		20	1
18265	RBX00-2250	2940-01-264-6353	2	1
61080	00308704		16	16
61080	00308802		19	1
61080	00313701		9	3
61080	00313802		11	5
61080	00315000	2990-01-264-6240	9	1
61080	00361202		18	16
61080	00361300		14	1
61080	00361801	2815-01-265-1752	11	8
61080	00362004		11	6
61080	00362310		15	4
61080	00362400		19	7
61080	00410611		9	5
61080	00427303		16	9
61080	00563001		18	10
61080	00614201		11	20
61080	00614301		11	22
61080	00635000		17	12
61080	00671001	4820-01-264-6294	6	10
61080	00691300		5	32
61080	00720400		8	18
61080	00736300		11	9
61080	00740121		12	19
61080	00742000		18	3
61080	00746800		12	13
61080	00902600		11	27
61080	00904100		13	3
61080	00904300	2815-01-068-3790	13	4
61080	00907601	2815-01-265-1753	12	1
61080	00910610	5330-01-285-4889	12	
61080	00912700	2815-01-265-1754	13	1
61080	01229700		19	

CROSS-REFERENCE INDEXES

PART NUMBER INDEX

FSCM	PART NUMBER	STOCK NUMBER	FIG.	ITEM
61080	03003700		11	16
61080	03004501		18	2
61080	03006602		18	6
61080	03022001		11	18
61080	03059700		16	1
61080	03060002		11	19
61080	03060403		19	14
61080	03060501		12	3
61080	03061100		12	9
61080	03061501		11	13
61080	03062100		3	7
61080	03062600		6	12
61080	03063201		17	9
61080	03063301		16	3
61080	03063401		16	2
61080	03063800		12	11
61080	03063901		11	26
61080	03064000		6	13
61080	03064801		18	1
61080	03066401		10	11
61080	03066501		10	10
61080	03066601		10	6
61080	03069004		19	3
61080	03091500		11	2
61080	03092500		11	14
61080	03104901		19	12
61080	03105600	5310-01-073-9220	8	3
61080	03112101	5310-01-264-6246	8	13
61080	03112200		8	15
61080	03112410		9	13
61080	03146200		16	8
61080	03150900		10	1
61080	03165500	5340-01-264-6223	5	3
61080	03169103	5365-01-283-1563	19	18
61080	03169300		19	17
61080	03169800		16	4
61080	03170001		18	4
61080	03171910		12	2
61080	03173100		11	15
61080	03173401		12	15
61080	03185100		11	29
61080	03205602		19	24
61080	03205703		16	17
61080	03205800		19	10
61080	03205901		18	9
61080	03206100		16	7
61080	03206200		19	23
61080	03206600		18	7
61080	03206700	3120-01-080-3018	14	4
61080	03206900	3120-01-080-3017	14	2
61080	03207600	5307-01-070-6470	19	6

CROSS-REFERENCE INDEXES

PART NUMBER INDEX

FSCM	PART NUMBER	STOCK NUMBER	FIG.	ITEM
61080	03207701	5307-01-070-2148	19	5
61080	03208001		12	6
61080	03208100		12	4
61080	03208210		12	21
61080	03208400		12	5
61080	03208902		11	7
61080	03209002		11	28
61080	03209101		11	31
61080	03209202		15	9
61080	03209300		15	15
61080	03209400	5365-01-264-6330	6	11
61080	03209500	5330-01-082-6176	6	11
61080	03209600	5330-01-078-4508	6	11
61080	03209700	5365-01-264-6331	6	11
610E0	03209800	5365-01-264-6332	6	11
61080	03210000		9	4
05748	03245		2	2
61080	03262000		9	6
61080	03278000		15	13
61080	03292900	5365-01-100-7392	5	6
61080	03393700		14	3
61080	03405700	4710-01-264-6340	6	3
61080	0343000		15	17
61080	03430101		11	21
			11	23
61080	03447300		6	2
61080	03457800		10	9
61080	03477200		4	3
61080	03485000		6	8
61080	03492900		10	12
61080	03493000		5	34
61080	03493100		5	10
61080	03493300		5	15
61080	03493600		5	14
61080	03511000		8	5
61080	03511500		8	9
61080	03511600		8	10
61080	03511700	5305-01-264-6243	8	11
61080	03511900		8	2
61080	03520600	5365-01-264-6224	5	4
61080	03525600		5	11
61080	03525800		5	31
61080	03569820		12	7
61080	03570600		12	18
61080	03581800		11	25
61080	03581900	5330-01-074-2106	11	25
61080	03582000		11	25
61080	03582100		11	25
61080	03582200		11	25
61080	03583300		13	2
61080	03611800		19	26

CROSS-REFERENCE INDEXES

PART NUMBER INDEX

FSCM	PART NUMBER	STOCK NUMBER	FIG.	ITEM
61080	03612400		15	7
61080	03639600		19	21
61080	03674200	4720-01-244-3573	5	13
61080	03699700		7	4
61080	03753800		12	20
61080	03766300		11	12
61080	03770300		11	25
61080	03892600		4	2
61080	03897400		17	3
61080	03899000		7	3
61080	03907100		17	6
61080	050023400		11	3
00736	1DM-007	2940-01-264-6347	2	8
00736	1NB-001		2	7
00736	1NB-004		2	11
00736	12B-006	5330-01-148-0218	2	10
00736	12PGJ		2	12
97403	13219E3937	4320-00-559-1518	1	12
97403	13219E3938	5365-01-127-2264	1	14
97403	13219E3941	4320-00-559-1517	1	13
97403	13219E3942	5330-01-017-8352	1	15
97403	13219E3943		1	19
97403	13219E3944		1	18
97403	13219E3947	4320-01-106-5591	1	10
97403	13219E3948		1	5
97403	13219E3949	4320-00-564-9061	1	
97403	13220E1127	6150-01-197-6335	20	2
00736	204302	4330-01-282-5169	2	3
00736	204302-800		2	9
00736	20515C	5310-01-084-8136	2	4
00736	22852	5310-01-264-6201	2	5
61080	40001300	5310-01-264-6239	9	10
61080	40002500		19	20
61080	40003100	5310-01-264-6234	6	5
61080	40006600	2910-01-264-6339	6	4
61080	40019000	2910-01-264-6238	9	7
61080	40021700		19	13
61080	40022000		19	2
61080	40022300		16	11
61080	40022800		19	9
61080	40023800		19	25
61080	40027800		17	11
61080	40028200	5310-01-080-0033	10	2
61080	40028300	5310-01-100-5204	5	19
61080	40028400	5310-01-101-2028	5	28
61080	40032611	2815-01-267-2310	5	33
61080	40032900	3120-01-265-1945	9	9
			15	5
61080	40033700		15	6
61080	40034200		18	11
61080	40035600		17	10

CROSS-REFERENCE INDEXES

PART NUMBER INDEX

FSCM	PART NUMBER	STOCK NUMBER	FIG.	ITEM
61080	40036800		16	5
61080	40037300	5340-01-264-6228	5	8
61080	40037900		15	12
61080	40039701		19	15
61080	40080201	2910-01-264-6235	6	7
61080	40081600	5310-01-264-6236	4	1
			7	5
61080	40089401	4330-01-264-6225	5	12
61080	40092700		5	9
61080	40093300		5	26
61080	50001000		15	3
61080	50001100	5330-01-080-1776	6	9
61080	50001200	5330-01-101-8076	5	17
61080	50001500		19	19
61080	50002900	5310-01-080-4999	3	6
			17	2
			17	8
61080	50003200	5310-01-077-6796	9	12
			15	11
61080	50003500	5310-01-074-1498	5	20
			8	8
			10	8
			11	4
61080	50003600		16	10
61080	50004200		16	12
61080	50006400	4730-01-103-3204	5	16
61080	50010000		18	5
61080	5001100		11	11
61080	50011100		18	15
61080	50012900	3110-01-080-0056	15	8
61080	50015900	5365-01-282-5670	5	18
61080	50016500		8	14
61080	50016700		8	17
		5310-01-079-9886	10	5
61080	50016800		7	2
61080	50017900		15	16
61080	50020600	5365-01-070-2325	13	5
61080	50022700	5310-01-081-0142	6	1
			8	1
			11	17
			16	13
61080	50022900	5310-01-080-0025	6	6
			19	11
61080	50023200	5310-01-264-6241	8	6
61080	50023400	5310-01-080-4987	10	7
61080	50023500		16	6
61080	50023800		12	8
61080	50024500	5310-01-070-7115	9	11
			15	10
61080	50024600		19	8
61080	50025100	5305-01-264-6244	8	12

CROSS-REFERENCE INDEXES

PART NUMBER INDEX

FSCM	PART NUMBER	STOCK NUMBER	FIG.	ITEM
61080	50025500		18	8
61080	50029200	5306-01-074-6815	3	5
			15	2
61080	50034100		12	17
61080	50034300		16	15
61080	50034600		12	14
61080	50034900		16	14
61080	50035700		12	23
61080	50036200		18	14
61080	50037200	5307-01-071-1326	4	4
61080	50037300		19	27
61080	50037800		7	8
61080	50042600		12	10
61080	50043700		11	24
61080	50047100		18	17
61080	50047700		18	13
61080	50050100	5305-01-069-8897	10	3
61080	50050400		19	22
61080	50051600	5305-01-080-4903	10	4
61080	50052000	5305-01-264-6247	8	16
61080	50052700	5305-01-264-6222	5	1
61080	50053400	5305-01-264-6237	9	2
			11	1
61080	50053800		15	1
61080	50054100		17	1
61080	50054500		17	7
61080	50056200		17	4
61080	50061600		17	5
61080	50062100		19	16
61080	50062200		15	14
61080	50062400	5310-01-264-6229	5	25
61080	50062900	5310-01-264-6242	8	7
61080	50107500		13	6
61080	50111000		12	22
61080	50122400	5330-01-264-6287	7	7
61080	50129900	5330-01-264-6286	5	22
61080	50133300		8	4
61080	50133900	5305-01-264-6227	5	7
61080	50144300	5307-01-267-2308	5	23
61080	50153800		19	4
61080	50154000		18	12
61080	50154100		11	10
61080	50154200		12	12
61080	50154300		12	16
61080	50158300	5310-01-264-6230	5	27
61080	50165600		5	2
61080	50169700	5306-01-282-8177	5	24
61080	50171500		5	30
61080	50171600		5	29
61080	50173100	5305-01-264-6226	5	5
			7	1

CROSS-REFERENCE INDEXES

PART NUMBER INDEX

FSCM	PART NUMBER	STOCK NUMBER	FIG.	ITEM
61080	50181400	2910-01-264-6337	5	21
61080	50252400		9	8
61080	50258000		11	30
61080	60462800	5210-01-265-1804	21	13
61080	60600000		21	3
61080	61208700	5210-01-269-2717	21	14
61080	61209000	5120-01-265-1805	21	15
61080	61209100	5120-01-102-1670	21	16
61080	61209900	5120-01-265-1807	21	17
61080	61210700	5110-01-265-1934	21	18
61080	61275200	5110-01-265-1808	21	19
61080	61311401		21	12
61080	61816800	5120-01-265-1967	21	4
61080	66503001		21	2
61080	66606700	5120-01-265-1810	21	5
61080	66606800	5120-01-265-1811	21	6
61080	66606900	5120-01-265-1812	21	7
61080	66607400	5120-01-265-1813	21	8
61080	66607509	5120-01-265-1814	21	9
61080	66632400	5120-01-265-1968	21	10
61080	66634600	5120-01-265-1815	21	20
61080	66641800	5120-01-265-1816	21	11
61080	66833500	5120-01-265-1918	21	1
61080	66838300	5120-01-265-1818	21	21
61080	99400010	2990-01-282-2567	7	6

CROSS-REFERENCE INDEXES
FIGURE AND ITEM NUMBER INDEX

FIG.	ITEM	STOCK NUMBER	FSCM	PART NUMBER
1		4320-00-564-9061	97403	13219E3949
1	1	5310-00-732-0558	96906	MS51967-8
1	2		96906	MS35338-46
1	3	5305-00-269-3211	96906	MS90725-60
1	4	5305-00-912-5113	96906	MS51096-359
1	5		97403	13219E3948
1	6	4730-00-287-2182	96906	MS20913-8
1	7	4730-00-188-3515	96906	MS20913-4
1	8	4730-00-088-9285	96906	MS27026-11
1	9	4730-00-938-7997	96906	MS27022-11
1	10	4320-01-106-5591	97403	13219E3947
1	11	5306-00-225-9089	96906	MS90726-34
1	12	4320-00-559-1518	97403	13219E3937
1	13	4320-00-559-1517	97403	1.3219E3941
1	14	5365-01-127-2264	97403	13219E3938
1	15	5330-01-017-8352	97403	13219E3942
1	16	5315-00-730-4563	96906	MS20066-141
1	17	5330-00-291-3272	96906	MS29513-270
1	18		97403	13219E3944
1	19		97403	13219E3943
1	20	5315-00-043-1787	96906	MS35756-34
1	21	5340-00-291-3492	96906	MS124698
2	1	2940-01-264-6353	18265	RBX00-2250
2	2		05748	03245
2	3	4330-01-282-5169	00736	204302
2	4	5310-01-084-8136	00736	20515C
2	5	5310-01-264-6201	00736	22852
2	6		00736	A198638-33
2	7		00736	1NB-001
2	8	2940-01-264-6347	00736	1DM-007
2	9		00736	204302-800
2	10	5330-01-148-0218	00736	12B-006
2	11		00736	1NB-004
2	12		00736	12PGJ
3	1	5310-00-732-0558	96906	MS51967-8
3	2		96906	MS35338-46
3	3	5305-00-269-3211	96906	MS90725-60
3	4	2815-01-264-6275	61080	E673LHK-241
3	5	5306-01-074-6815	61080	50029200
3	6	5310-01-080-4999	61080	50002900
3	7		61080	03062100
4	1	5310-01-264-6236	61080	40081600
4	2		61080	03892600
4	3		61080	03477200
4	4	5307-01-071-1326	61080	50037200
5	1	5305-01-264-6222	61080	50052700
5	2		61080	50165600
5	3	5340-01-264-6223	61080	03165500
5	4	5365-01-264-6224	61080	03520600
5	5	5305-01-264-6226	61080	50173100
5	6	5365-01-100-7392	61080	03292900

CROSS-REFERENCE INDEXES
FIGURE AND ITEM NUMBER INDEX

FIG.	ITEM	STOCK NUMBER	FSCM	PART NUMBER
5	7	5305-01-264-6227	61080	50133900
5	8	5340-01-264-6228	61080	40037300
5	9		61080	40092700
5	10		61080	03493100
5	11		61080	03525600
5	12	4330-01-264-6225	61080	40089401
5	13	4720-01-244-3573	61080	03674200
5	14		61080	03493600
5	15		61080	03493300
5	16	4730-01-103-3204	61080	50006400
5	17	5330-01-101-8076	61080	50001200
5	18	5365-01-282-5670	61080	50015900
5	19	5310-01-100-5204	61080	40028300
5	20	5310-01-074-1498	61080	50003500
5	21	2910-01-264-6337	61080	50181400
5	22	5330-01-264-6286	61080	50129900
5	23	5307-01-267-2308	61080	50144300
5	24	5306-01-282-8177	61080	50169700
5	25	5310-01-264-6229	61080	50062400
5	26		61080	40093300
5	27	5310-01-264-6230	61080	50158300
5	28	5310-01-101-2028	61080	40028400
5	29		61080	50171600
5	30		61080	50171500
5	31		61080	03525800
5	32		61080	00691300
5	33	2815-01-267-2310	61080	40032611
5	34		61080	03493000
6	1	5310-01-081-0142	61080	50022700
6	2		61080	03447300
6	3	4710-01-264-6340	61080	03405700
6	4	2910-01-264-6339	61080	40006600
6	5	5310-01-264-6234	61080	40003100
6	6	5310-01-080-0025	61080	50022900
6	7	2910-01-264-6235	61080	40080201
6	8		61080	03485000
6	9	5330-01-080-1776	61080	50001100
6	10	4820-01-264-6294	61080	00671001
6	11	5330-01-078-4508	61080	03209600
6	11	5330-01-082-6176	61080	03209500
6	11	5365-01-264-6330	61080	03209400
6	11	5365-01-264-6331	61080	03209700
6	11	5365-01-264-6332	61080	03209800
6	12		61080	03062600
6	13		61080	03064000
7	1	5305-01-264-6226	61080	50173100
7	2		61080	50016800
7	3		61080	03899000
7	4		61080	03699700
7	5	5310-01-264-6236	61080	40081600
7	6	2990-01-282-2567	61080	99400010

CROSS-REFERENCE INDEXES
FIGURE AND ITEM NUMBER INDEX

FIG.	ITEM	STOCK NUMBER	FSCM	PART NUMBER
7	7	5330-01-264-6287	61080	50122400
7	8		61080	50037800
8	1	5310-01-081-0142	61080	50022700
8	2		61080	03511900
8	3	5310-01-073-9220	61080	03105600
8	4		61080	50133300
8	5		61080	03511000
8	6	5310-01-264-6241	61080	50023200
8	7	5310-01-264-6242	61080	50062900
8	8	5310-01-074-1498	61080	50003500
8	9		61080	03511500
8	10		61080	03511600
8	11	5305-01-264-6243	61080	03511700
8	12	5305-01-264-6244	61080	50025100
8	13	5310-01-264-6246	61080	03112101
8	14		61080	50016500
8	15		61080	03112200
8	16	5305-01-264-6247	61080	50052000
8	17		61080	50016700
8	18		61080	00720400
9	1	2990-01-264-6240	61080	00315000
9	2	5305-01-264-6237	61080	50053400
9	3		61080	00313701
9	4		61080	03210000
9	5		61080	00410611
9	6		61080	03262000
9	7	2910-01-264-6238	61080	40019000
9	8		61080	50252400
9	9	3120-01-265-1945	61080	40032900
9	10	5310-01-264-6239	61080	40001300
9	11	5310-01-070-7115	61080	50024500
9	12	5310-01-077-6796	61080	50003200
9	13		61080	03112410
10	1		61080	03150900
10	2	5310-01-080-0033	61080	40028200
10	3	5305-01-069-8897	61080	50050100
10	4	5305-01-080-4903	61080	50051600
10	5	5310-01-079-9886	61080	50016700
10	6		61080	03066601
10	7	5310-01-080-4987	61080	50023400
10	8	5310-01-074-1498	61080	50003500
10	9		61080	03457800
10	10		61080	03066501
10	11		61080	03066401
10	12		61080	03492900
11	1	5305-01-264-6237	61080	50053400
11	2		61080	03091500
11	3		61080	050023400
11	4	5310-01-074-1498	61080	50003500
11	5		61080	00313802
11	6		61080	00362004

CROSS-REFERENCE INDEXES
FIGURE AND ITEM NUMBER INDEX

FIG.	ITEM	STOCK NUMBER	FSCM	PART NUMBER
11	7		61080	03208902
11	8	2815-01-265-1752	61080	00361801
11	9		61080	00736300
11	10		61080	50154100
11	11		61080	5001100
11	12		61080	03766300
11	13		61080	03061501
11	14		61080	03092500
11	15		61080	03173100
11	16		61080	03003700
11	17		61080	50022700
11	18		61080	03022001
11	19		61080	03060002
11	20		61080	00614201
11	21		61080	03430101
11	22		61080	00614301
11	23		61080	03430101
11	24		61080	50043700
11	25		61080	03581800
11	25		61080	03582000
11	25		61080	03582100
11	25		61080	03582200
11	25		61080	03770300
11	25	5330-01-074-2106	61080	03581900
11	26		61080	03063901
11	27		61080	00902600
11	28		61080	03209002
11	29		61080	03185100
11	30		61080	50258000
11	31		61080	03209101
12		5330-01-285-4889	61080	00910610
12	1	2815-01-265-1753	61080	00907601
12	2		61080	03171910
12	3		61080	03060501
12	4		61080	03208100
12	5		61080	03208400
12	6		61080	03208001
12	7		61080	03569820
12	8		61080	50023800
12	9		61080	03061100
12	10		61080	50042600
12	11		61080	03063800
12	12		61080	50154200
12	13		61080	00746800
12	14		61080	50034600
12	15		61080	03173401
12	16		61080	50154300
12	17		61080	50034100
12	18		61080	03570600
12	19		61080	00740121
12	20		61080	03753800

CROSS-REFERENCE INDEXES
FIGURE AND ITEM NUMBER INDEX

FIG.	ITEM	STOCK NUMBER	FSCM	PART NUMBER
12	21		61080	03208210
12	22		61080	50111000
12	23		61080	50035700
13	1	2815-01-265-1754	61080	00912700
13	2		61080	03583300
13	3		61080	00904100
13	4	2815-01-068-3790	61080	00904300
13	5	5365-01-070-2325	61080	50020600
13	6		61080	50107500
14	1		61080	00361300
14	2	3120-01-080-3017	61080	03206900
14	3		61080	03393700
14	4	3120-01-080-3018	61080	03206700
15	1		61080	50053800
15	2		61080	50029200
15	3		61080	50001000
15	4		61080	00362310
15	5	3120-01-265-1945	61080	40032900
15	6		61080	40033700
15	7		61080	03612400
15	8	3110-01-080-0056	61080	50012900
15	9		61080	03209202
15	10		61080	50024500
15	11		61080	50003200
15	12		61080	40037900
15	13		61080	03278000
15	14		61080	50062200
15	15		61080	03209300
15	16		61080	50017900
15	17		61080	0343000
16	1		61080	03059700
16	2		61080	03063401
16	3		61080	03063301
16	4		61080	03169800
16	5		61080	40036800
16	6		61080	50023500
16	7		61080	03206100
16	8		61080	03146200
16	9		61080	00427303
16	10		61080	50003600
16	11		61080	40022300
16	12		61080	50004200
16	13		61080	50022700
16	14		61080	50034900
16	15		61080	50034300
16	16		61080	00308704
16	17		61080	03205703
17	1		61080	50054100
17	2		61080	50002900
17	3		61080	03897400
17	4		61080	50056200

CROSS-REFERENCE INDEXES
FIGURE AND ITEM NUMBER INDEX

FIG.	ITEM	STOCK NUMBER	FSCM	PART NUMBER
17	5		61080	50061600
17	6		61080	03907100
17	7		61080	50054500
17	8		61080	50002900
17	9		61080	03063201
17	10		61080	40035600
17	11		61080	40027800
17	12		61080	00635000
18	1		61080	03064801
18	2		61080	03004501
18	3		61080	00742000
18	4		61080	03170001
18	5		61080	50010000
18	6		61080	03006602
18	7		61080	03206600
18	8		61080	50025500
18	9		61080	03205901
18	10		61080	00563001
18	11		61080	40034200
18	12		61080	50154000
18	13		61080	50047700
18	14		61080	50036200
18	15		61080	50011100
18	16		61080	00361202
18	17		61080	50047100
19			61080	01229700
19	1		61080	00308802
19	2		61080	40022000
19	3		61080	03069004
19	4		61080	50153800
19	5	5307-01-070-2148	61080	03207701
19	6	5307-01-070-6470	61080	03207600
19	7		61080	00362400
19	8		61080	50024600
19	9		61080	40022800
19	10		61080	03205800
19	11		61080	50022900
19	12		61080	03104901
19	13		61080	40021700
19	14		61080	03060403
19	15		61080	40039701
19	16		61080	50062100
19	17		61080	03169300
19	18	5365-01-283-1563	61080	03169103
19	19		61080	50001500
19	20		61080	40002500
19	21		61080	03639600
19	22		61080	50050400
19	23		61080	03206200
19	24		61080	03205602
19	25		61080	40023800

CROSS-REFERENCE INDEXES
FIGURE AND ITEM NUMBER INDEX

FIG.	ITEM	STOCK NUMBER	FSCM	PART NUMBER
19	26		61080	03611800
19	27		61080	50037300
20	1		IU339	PAF-111
20	2	6150-01-197-6335	97403	13220E1127
21	1	5120-01-265-1918	61080	66833500
21	2		61080	66503001
21	3		61080	60600000
21	4	5120-01-265-1967	61080	61816800
21	5	5120-01-265-1810	61080	66606700
21	6	5120-01-265-1811	61080	66606800
21	7	5120-01-265-1812	61080	66606900
21	8	5120-01-265-1813	61080	66607400
21	9	5120-01-265-1814	61080	66607500
21	10	5120-01-265-1968	61080	66632400
21	11	5120-01-265-1816	61080	66641800
21	12		61080	61311401
21	13	5210-01-265-1804	61080	60462800
21	14	5210-01-269-2717	61080	61208700
21	15	5120-01-265-1805	61080	61209000
21	16	5120-01-102-1670	61080	61209100
21	17	5120-01-265-1807	61080	61209900
21	18	5110-01-265-1934	61080	61210700
21	19	5110-01-265-1808	61080	61275200
21	20	5120-01-265-1815	61080	66634600
21	21	5120-01-265-1818	61080	66838300

By Order of the Secretary of the Army:

CARL E. VUONO
General, United States Army
Chief of Staff

Official:

WILLIAM J. MEEHAN, II
Brigadier General, United States Army
The Adjutant General

DISTRIBUTION:

To be distributed in accordance with DA Form 12-25E, Operational, Unit, Direct Support and General Support Maintenance requirements for Forward Area Refueling Equipment (RFE 1000)

☆ U.S. GOVERNMENT PRINTING OFFICE: 1990 754-029/20111

RECOMMENDED CHANGES TO EQUIPMENT TECHNICAL PUBLICATIONS

SOMETHING WRONG WITH PUBLICATION



*THEN...JOT DOWN THE
DOPE ABOUT IT ON THIS FORM.
CAREFULLY TEAR IT OUT, FOLD IT
AND DROP IT IN THE MAIL.*

FROM: (PRINT YOUR UNIT'S COMPLETE ADDRESS)

DATE SENT

PUBLICATION NUMBER

PUBLICATION DATE

PUBLICATION TITLE

BE EXACT PIN-POINT WHERE IT IS

PAGE
NO.

PARA-
GRAPH

FIGURE
NO.

TABLE
NO.

IN THIS SPACE, TELL WHAT IS WRONG
AND WHAT SHOULD BE DONE ABOUT IT.

TEAR ALONG PERFORATED LINE

PRINTED NAME, GRADE OR TITLE AND TELEPHONE NUMBER

SIGN HERE

THE METRIC SYSTEM AND EQUIVALENTS

Linear Measure

1 centimeter = 10 millimeters = .39 inch
 1 decimeter = 10 centimeters = 3.94 inches
 1 meter = 10 decimeters = 39.37 inches
 1 dekameter = 10 meters = 32.8 feet
 1 hectometer = 10 dekameters = 328.08 feet
 1 kilometer = 10 hectometers = 3,280.8 feet

Square measure

1 sq. centimeter = 100 sq. millimeters = .155 sq. in.
 1 sq. decimeter = 100 sq. centimeters = 15.5 inches
 1 sq. meter (centare) = 100 sq. decimeters = 10.76 feet
 1 sq. dekameter (are) = 100 sq. meters = 1,076.4 sq. ft.
 1 sq. hectometer (hectare) = 100 sq. dekameters = 2.47 acres
 1 sq. kilometer = 100 hectometers = .386 sq. miles

Weights

1 centigram = 10 milligrams = .15 grain
 1 decigram = 10 centigrams = 1.54 grains
 1 gram = 10 decigrams = .035 ounce
 1 dekagram = 10 grams = .35 ounce
 1 hectogram = 10 dekagrams = 3.52 ounces
 1 kilogram = 10 hectograms = 2.2 pounds
 1 quintal = 100 kilograms = 220.46 pounds
 1 metric ton = 10 quintals = 1.1 short tons

Liquid Measure

1 dekaliter = 10 liters = 2.64 gallons
 1 hectoliter = 10 dekaliters = 26.42 gallons
 1 kiloliter = 10 hectoliters = 264.18 gallons
 1 liter = 10 deciliters = 33.81 fl. ounces
 1 centiliter = 10 milliliters = .34 fl. ounce
 1 deciliter = 10 centiliters = 3.38 fl. ounces
 1 metric ton = 10 quintals = 1.1 short tons

Cubic Measure

1 cu. centimeter = 1000 cu. millimeters = .06 cu. inch
 1 cu. decimeter = 1000 cu. centimeters = 61.02 cu. in.
 1 cu. meter = 1000 cu. decimeters = 35.31 cu. feet

Approximate Conversion Factors

To change	To	Multiply by	To change	To	Multiply by
inches	centimeters	2.540	ounce inches	newton-meters	.0070062
feet	meters	.305	centimeters	inches	.394
yards	meters	.914	meters	feet	3.280
miles	kilometers	1.609	meters	yards	1.094
sq. inches	sq. centimeters	6.451	kilometers	miles	.621
sq. feet	sq. meters	.093	sq. centimeters	sq. inches	.155
sq. yards	sq. meters	.836	sq. meters	sq. yards	10.764
sq. miles	sq. kilometers	2.590	sq. kilometers	sq. miles	1.196
acres	sq. hectometers	.405	sq. hectometers	acres	2.471
cubic feet	cubic meters	.028	cubic meters	cubic feet	35.315
cubic yards	cubic meters	.765	milliliters	fluid ounces	.034
fluid ounces	milliliters	29.573	liters	pints	2.113
pints	liters	.472	liters	quarts	1.057
quarts	liters	.946	grams	ounces	.035
gallons	liters	3.785	kilograms	pounds	2.205
ounces	grams	28.349	metric tons	short tons	1.102
pounds	kilograms	.454	pound-feet	newton-meters	1.356
short tons	metric tons	.907			
pound inches	newton-meters	.11296			

Temperature (Exact)

°F Fahrenheit temperature

5/9 (after subtracting 32)

Celsius Temperature °C

TM 5-4320-313-24P

PIN: 049401-000